



Parks & Recreation Master Plan 2026~2030

This 5-Year Parks and Recreation Master Plan was created for the Town of Fremont, in Steuben County, Indiana, in 2025. The Plan was adopted on December 16, 2025 by the Town Council.

Acknowledgments

Parks and Recreation Master Plan Steering Committee

Steve Brown, Plan Commission

Lori Crandall, Plan Commission, Fremont Historical Society

Linda Fulton, Town Council and Redevelopment Commission

Tyler Howard, Parks Committee

Becky Maggart, Town of Fremont

Dawn Musson, Fremont Area Chamber of Commerce

Kathy Parsons, Town of Fremont

Dr. William Stitt, Fremont Community Schools, Town Council, and Redevelopment Commission

Town Council

Linda Fulton, President

Dr. William Stitt, Vice President

Barry Wilcox, Member

Ashlee Hoos, Member

Scott Glendening, Member

Parks Committee

Tyler Howard, President

Kayla Johnson, Vice President

Kayleen Hart, Secretary

Dona Bond, Board Member

Vacant

Plan Commission

Ray Lauer, President

Jessica Wendorf, Vice President

Kathy Parsons, Secretary

Steve Brown, Member

Lori Crandall, Member

Terry Fugate, Member

John Nigro, Member

Ted Walter, Member

Barry Wilcox, Member



Town of Fremont
PO Box 602
205 N. Tolford St.
Fremont, IN 46737
(260) 495-7805
Fax: (260) 495-2446
fremontct@townoffremont.org

Prepared by:



Abonmarche Consultants
303 River Race Drive
Goshen, Indiana 46526

Project #24-1967
December 2025

CONTENTS

INTRODUCTION.....	4
<i>Plan Intent.....</i>	<i>5</i>
<i>Planning Area</i>	<i>5</i>
<i>Town Parks and Recreation Overview.....</i>	<i>5</i>
<i>Administration of the Parks.....</i>	<i>6</i>
<i>Parks Committee Mission.....</i>	<i>7</i>
<i>Goals for Parks and Recreation.....</i>	<i>7</i>
COMMUNITY PROFILE	8
<i>Town of Fremont Vision Statement.....</i>	<i>9</i>
<i>Location and History.....</i>	<i>10</i>
<i>Natural Features</i>	<i>10</i>
<i>Population and Household Characteristics</i>	<i>12</i>
PUBLIC PARTICIPATION	16
<i>Engagement Timeline.....</i>	<i>17</i>
<i>Plan Steering Committee</i>	<i>18</i>
<i>Parks Committee.....</i>	<i>18</i>
<i>Community Character Survey.....</i>	<i>18</i>
<i>Parks Use Survey</i>	<i>18</i>
<i>Parks Plan Workshop</i>	<i>19</i>
<i>Draft Plan Public Review and Open House</i>	<i>19</i>
<i>Plan Adoption</i>	<i>19</i>
FREMONT PARKS.....	20
<i>Inventory Overview</i>	<i>21</i>
<i>Fremont Pickleball Courts.....</i>	<i>22</i>
<i>Follett Estates Park.....</i>	<i>24</i>
<i>Peek-A-Boo Park.....</i>	<i>28</i>
<i>Rocket Ship Park.....</i>	<i>30</i>
<i>Town Ball Park</i>	<i>34</i>
<i>Broad Street Park.....</i>	<i>36</i>
<i>Other Recreation Facilities in the Area</i>	<i>40</i>
NEEDS ANALYSIS.....	44
<i>Community-Identified Needs</i>	<i>45</i>
<i>Facilities Inventory and ADA Assessment.....</i>	<i>50</i>
<i>National Recreation and Park Association (NRPA) Park Metrics.....</i>	<i>52</i>
PRIORITIES & ACTION SCHEDULE.....	54
APPENDIX	60

INTRODUCTION

Plan Intent

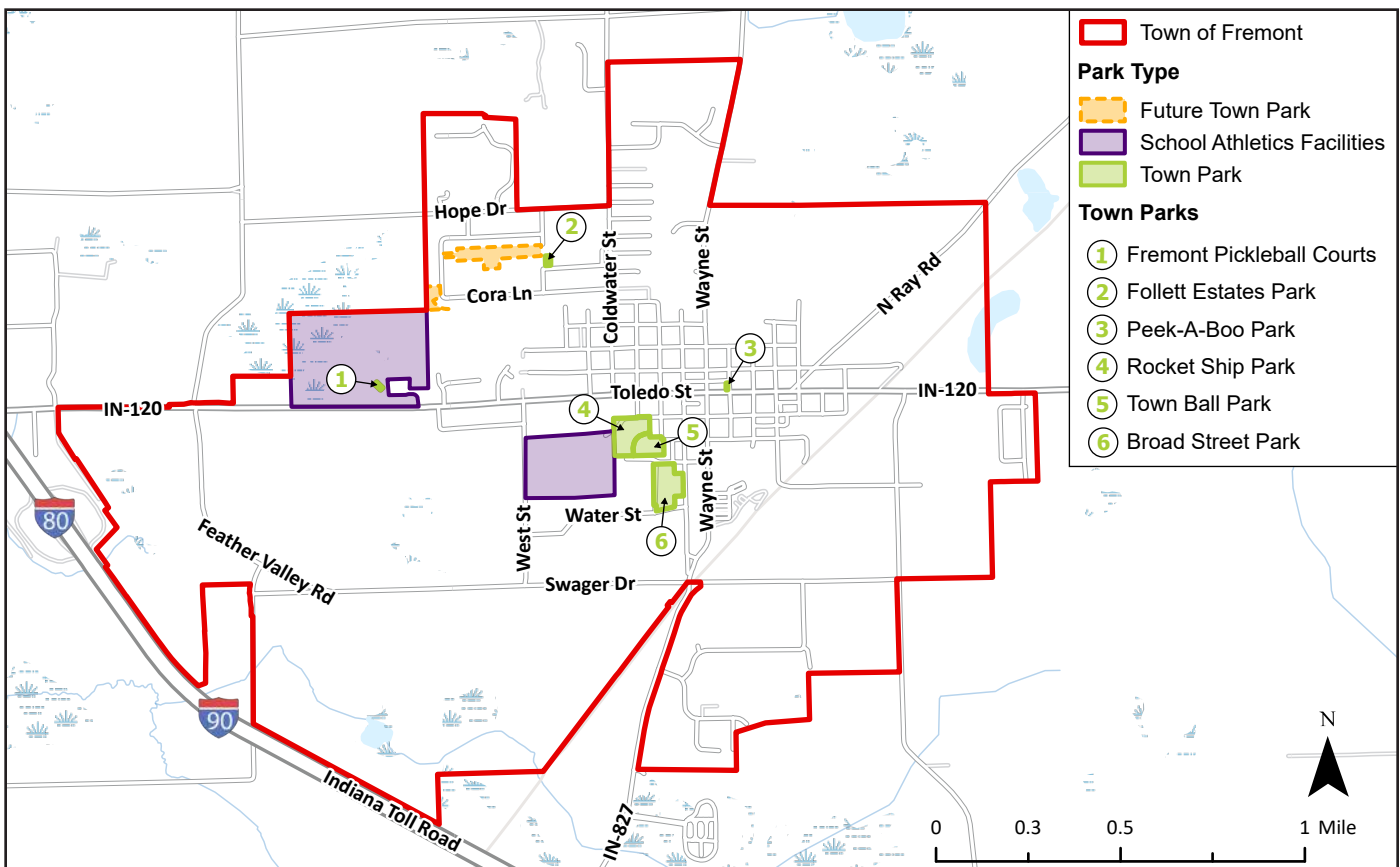
Planning Area

Town Parks and Recreation Overview

Administration of the Parks

Parks Committee Mission

Goals for Parks and Recreation



Plan Intent

This Parks and Recreation Master Plan is intended to be used for the planning, development, and management of parks and recreation facilities in Fremont, Indiana, over the next five years (2026-2030). It confirms the mission of the Fremont Parks Committee and identifies needs and deficiencies for recreation opportunities in the community.

Planning Area

This Parks and Recreation Master Plan is for the Town of Fremont, located in Steuben County, northeast Indiana. The official planning area for this plan is the town corporate limits, which encompasses approximately 3 square miles and an estimated population of 2,034 (2020 Census).

The Plan focuses on facilities at the six parks under the jurisdiction of the Town, but also considers other nearby parks that are accessible to its residents, such as school athletics facilities and wildlife conservation areas. Fremont is situated near many lakes and two state parks that offer unique recreational opportunities for hiking, camping, swimming, horseback riding, cross country skiing, hunting, and general enjoyment of large natural areas. In addition, nearby Angola has several municipal parks that are frequented by Fremont residents.

Town Parks and Recreation Overview

Facilities

The Town of Fremont currently manages six parks on approximately 13 acres of parkland. The Town has added many new parks and recreation facilities in recent years that have expanded opportunities for its residents and visitors. Since the previous Parks and Recreation Plan was adopted in 2013, the Town has installed the following new facilities:

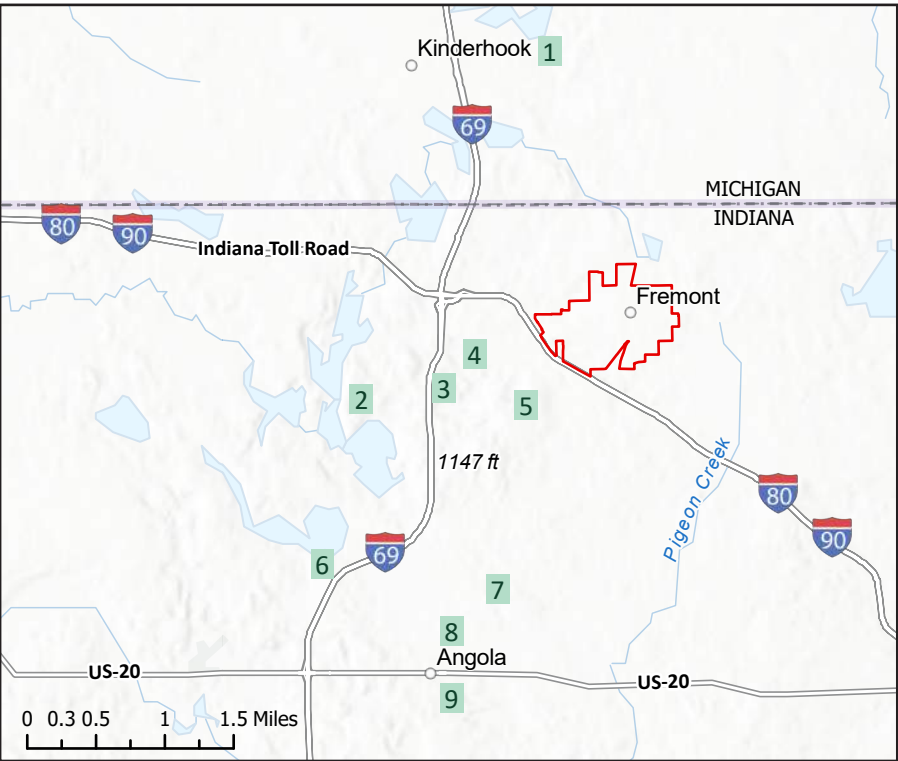
- Fremont Pickleball Courts at Vistula Park
- Splash Pad at Rocket Ship Park
- New exercise equipment at Rocket Ship Park
- Dog Park at Broad Street Park
- Peek-A-Boo Park

In addition, the Town is considering more new facilities, including a re-located Follett Estates Park and a trail to connect it to Vistula Park.

In 2025, the Town repainted benches and play equipment throughout the parks.

Programming

The Town does not currently offer regular programming at its parks. However, the Parks Committee has begun hosting a few annual events, such as a Back-to-School event at Rocket Ship Park and Woofstock at the Broad Street Dog Park. Future programming and events is under consideration.



Regional Parks and Recreation Areas

1. Coldwater Lake State Park
2. Pokagon State Park
3. Trine State Recreation Area
4. Marsh Lake Wetlands State Fish and Wildlife Area
5. McClue Nature Preserve
6. Steuben County Park
7. Marion Woods Nature Preserve
8. Fireman's Park (Angola)
9. Commons Park (Angola)

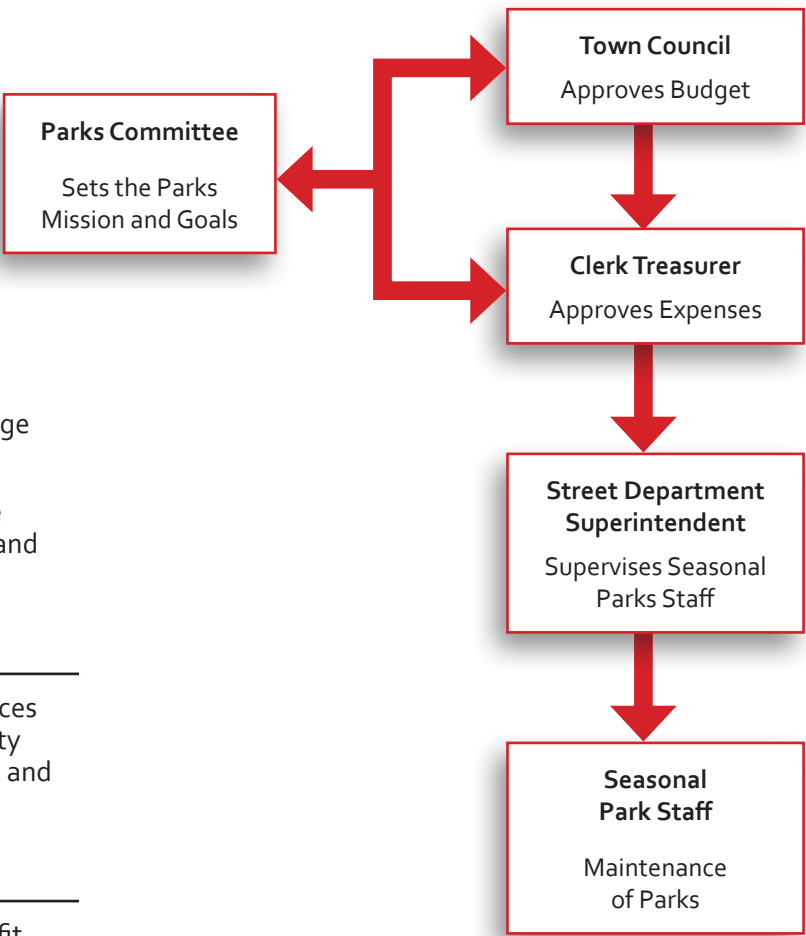
Administration of the Parks

Administrative Structure

In 2025, the Fremont Parks Board was reformed as a Parks Committee. The Committee is appointed with staggered four-year terms and is responsible for setting the mission and goals for parks and recreation in the town. Currently, this is a four-person committee.

The Clerk Treasurer approves some expenses requested by the Committee, but the Town Council approves the overall budget and large expenses.

The town does not have a Parks Department. The Street Department maintains the parks facilities and supervises 1 seasonal staff person.



Budget

The budget for the parks is approved yearly. Sources of revenue for this budget include general property taxes, financial institutions tax, license excise tax, and commercial vehicle excise tax.

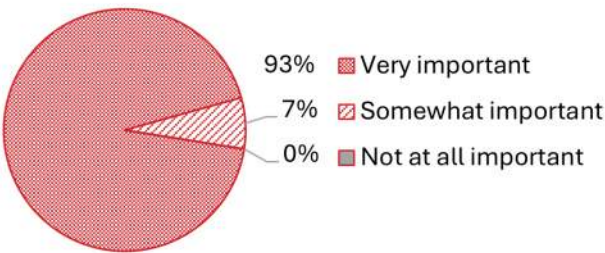
Partnerships

Like many communities, Fremont residents benefit from the local school recreational facilities. Vistula Park, in particular, is popular for its walking trail through a 10-acre wetland and wooded area. While there is no official agreement between the Town and the School Corporation, this park is a significant part of the local recreation opportunities.

The Town also partners with Schools and the Fremont Public Library for events at the parks, such as Woofstock at the Broad Street Dog Park and a Back-to-School event at Rocket Ship Park.

How would you rate the importance of providing town-managed parks in Fremont?

(2025 Fremont Parks Use Survey, 44 Responses)



Parks Committee Mission

The mission of the Fremont Parks Committee is to enhance the quality of life in the town by providing the best possible recreational facilities, open natural spaces, and programs for its citizens.

Goals for Parks and Recreation

The Parks Committee has set the following four goals for providing parks and recreation opportunities in Fremont:

- Assure that each park property, all playground equipment, and park amenities and facilities are in excellent condition, clean, free from trash, safe, and convey a positive impression and experience to residents and visitors.
- Provide recreational facilities that meet the needs of the Fremont community, considering the resources available for purchasing, installing, and maintaining the amenity.
- Build resource capacity for the advancement of parks and recreation in Fremont. Specifically, enhance the leadership, volunteer base, and financial resources.
- Improve ADA compliance of parks and recreation facilities to meet the accessibility needs of visitors with mobility challenges.

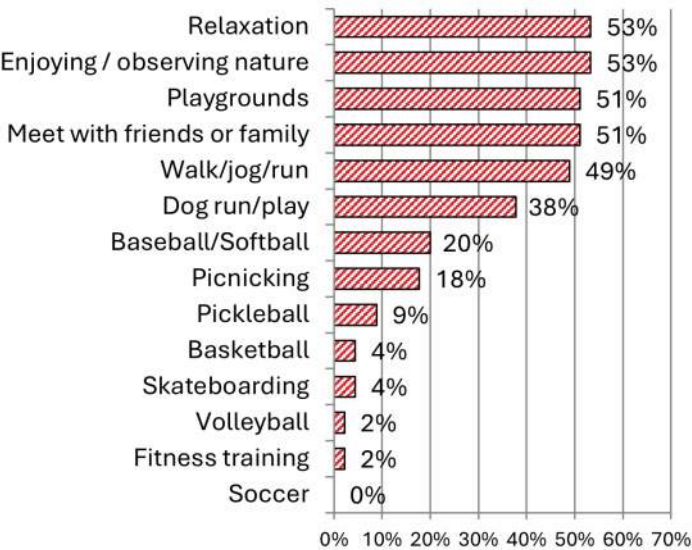
What is your favorite thing about the parks in Fremont? (30 Responses)

Larger font size indicates the theme was mentioned more often than the smaller font size. Survey themes were summarized by a human. Word cloud generated with worditout.com



What do you typically do when you visit the parks in Fremont? (Select all that apply)

(2025 Fremont Parks Use Survey, 44 Responses)



COMMUNITY PROFILE

Town of Fremont Vision Statement

Location and History

Natural Features

Population and Household Characteristics





Town of Fremont Vision Statement

Fremont: A charming, community-focused, and vibrant small town that provides a great place to raise a family and conduct business, and that provides quality infrastructure and opportunities for connection.



Location and History

The Town of Fremont is located in Steuben County, in the northeast corner of Indiana, near the borders of both Michigan and Ohio. The area was first settled as Willow Prairie in 1834, platted as Brockville in 1837, and incorporated as the Town of Fremont in 1867. The Town encompasses a little over 3 square miles (1,992 acres).

Fremont was founded on the Vistula Trail, a Native American route between present-day Green Bay, Wisconsin, and Pittsburgh, Pennsylvania. The trail became a popular route for French missionaries and fur traders in the 1600s and 1700s. * It is now State Road 120, named Toledo Street in Fremont. Two major interstate highways now intersect near the town. The east/west Indiana Toll Road (I-80 / I-90) follows the town's southwest border and the north/south I-69 is just 2 miles to the west. These highways connect Fremont to many large cities within just a few hours drive.

** Fremont history is summarized from information provided on the Fremont Area Chamber of Commerce website. (<https://fremontchamber.us/history.html>)*

Natural Features

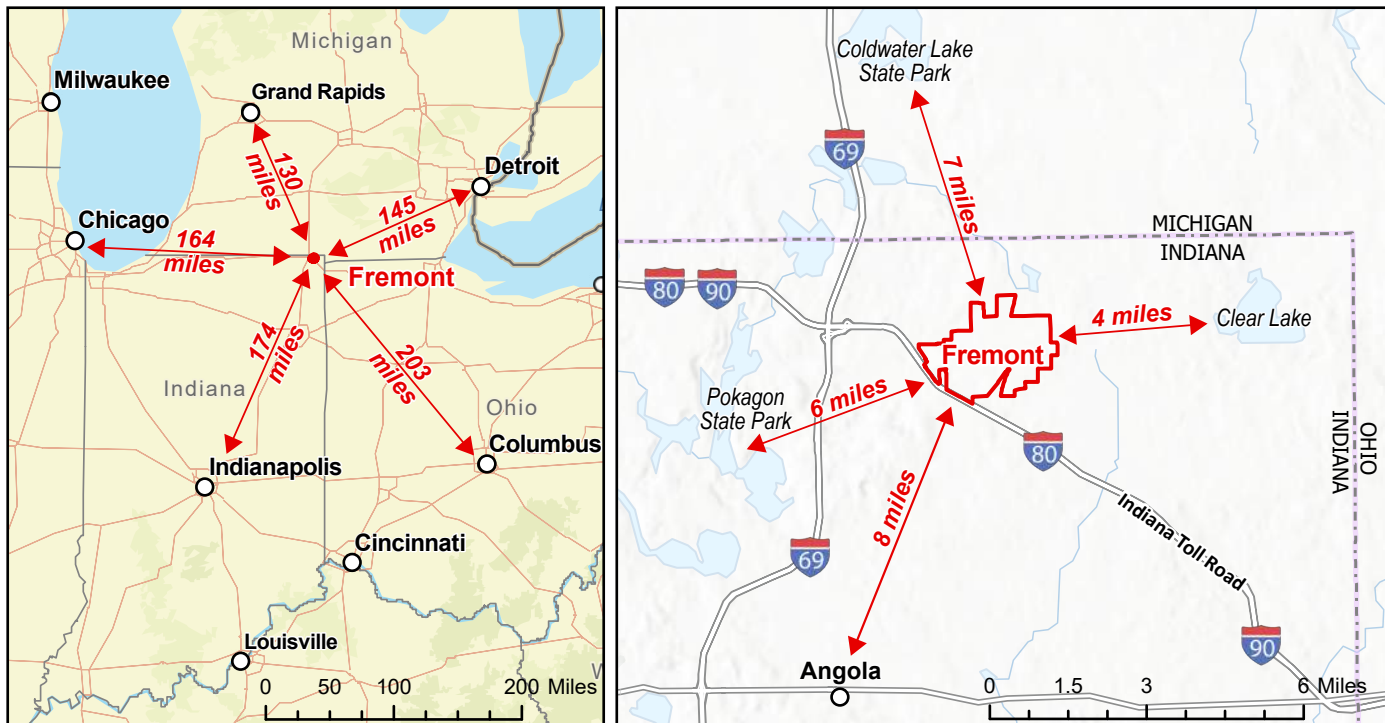
This area of Steuben County has many natural resources, including lakes, rivers, wetlands, meadows, and forests. Pokagon State Park is just a few miles to the southwest of town, offering both recreational and conservational benefits to surrounding communities. Fremont is within the Fawn River Watershed in the St. Joseph River Basin.

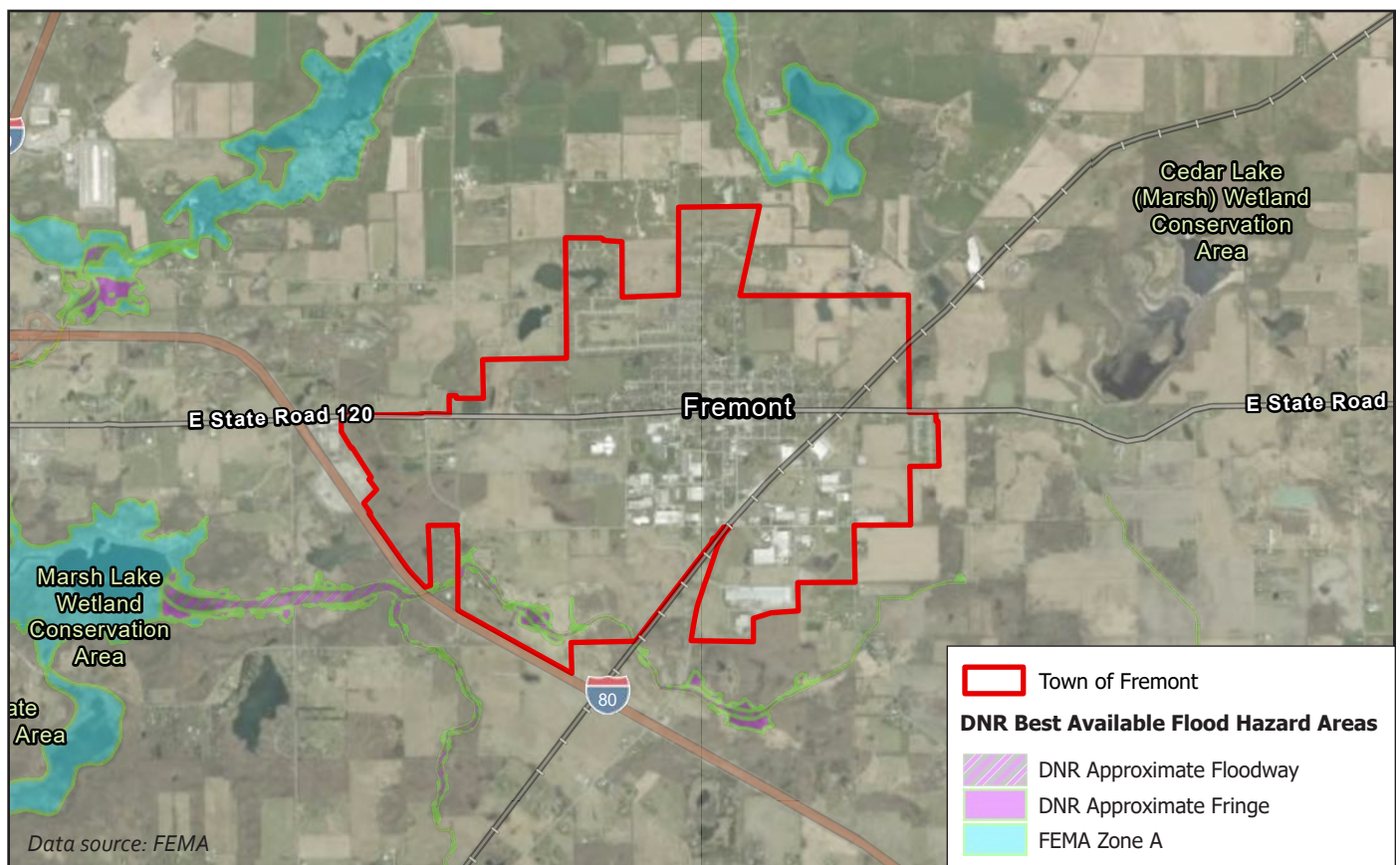
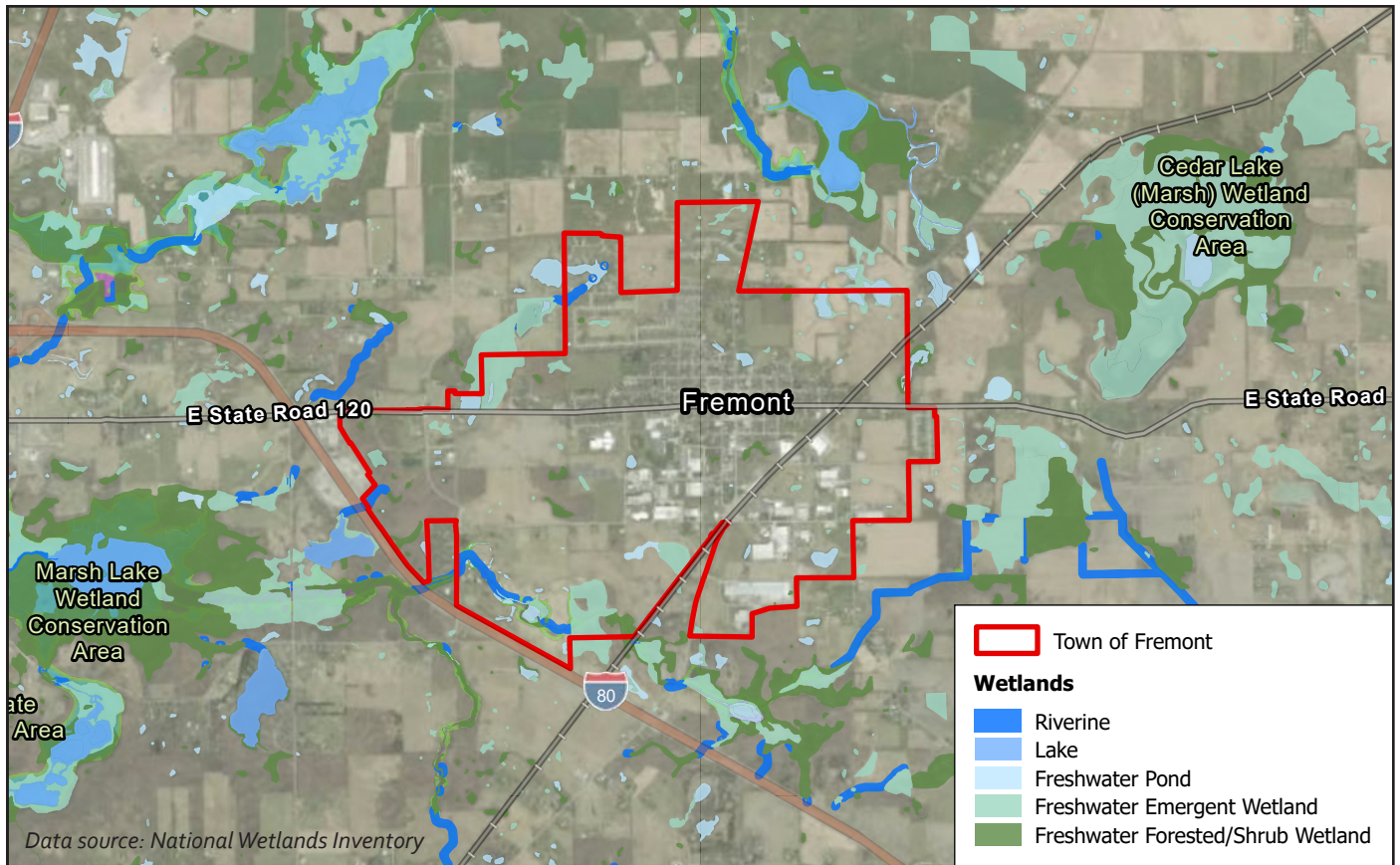
Within town limits, there are approximately 147.6 acres of wetlands, including emergent wetlands, deciduous forested wetlands, ponds, and rivers. These areas make up less than 8% of the total land area and are concentrated along the southwestern town border, around Eaton Lake and Garn Ditch, and west of Vistula Park. The only flood hazard areas in town surround Eaton Lake and the Garn Ditch.

Wetland Type	Acres in Fremont
Freshwater Emergent Wetland	75.3
Freshwater Forested/Shrub Wetland	25.1
Freshwater Pond	44.6
Riverine	2.6
Total	147.6

Approximate Distance by Road to Key Destinations

Distances estimated using Google Maps





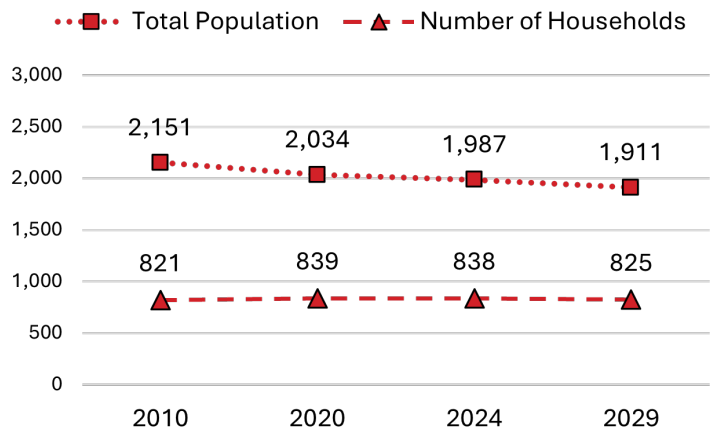
Population and Household Characteristics

According to US Census Bureau data, the population of Fremont declined by 5.4% between the 2010 and 2020 Census counts and is forecast to continue the decline. This is in contrast to trends seen in nearby City of Angola and Steuben County, which both saw increases during these years. Notably, the number of households in Fremont grew by 2.2% during the 2010-2020 decade as the number of people in each household ("household size") decreased from 2.6 people per household in 2010 to 2.4 in 2020.

At the same time, the median age of Fremont's population increased from 33 in 2010 to 37 in 2020. It is currently estimated at 39, compared to 32 in Angola and 43 in the County as a whole. Additionally, a higher percentage of Fremont's households have at least one resident with a disability (36%) than in Angola (30%) or the County (27%).

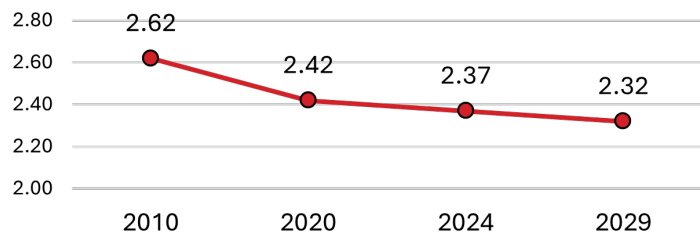
Population and Households

Census and Esri Forecasts



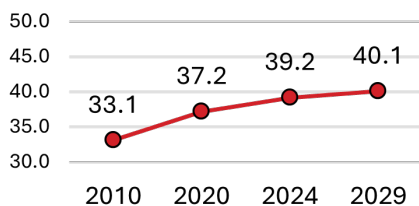
Average Household Size

Census and Esri Forecasts



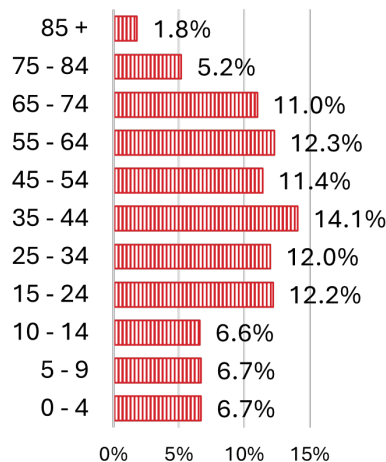
Median Age

Census and Esri Forecasts



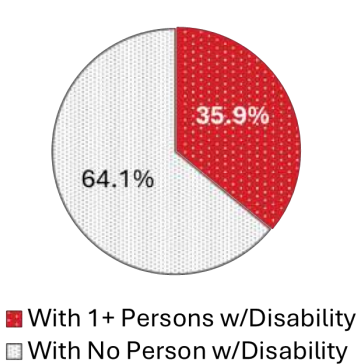
2024 Population by Age

Esri Forecast



Households by Disability Status

2018-2022 ACS Estimate



Select Comparison Data for Fremont, Angola, and Steuben County, Indiana

The following data were collected from Esri Business Analyst, using US Census Bureau and American Community Survey (ACS) sources.

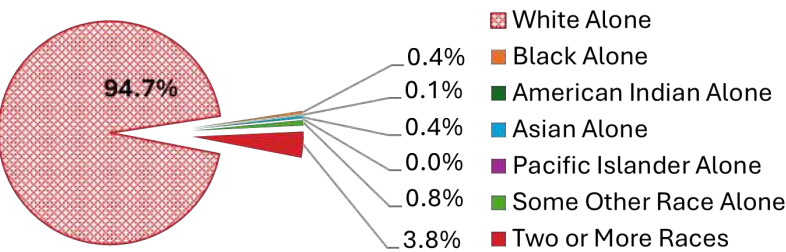
	Fremont, IN	Angola, IN	Steuben County, IN
Total Population	1,987	9,604	35,010
2020 Total Population	2,034	9,388	34,435
2010 Total Population	2,151	8,674	34,185
Total Households	886	3,372	13,765
2020 Households	839	3,399	13,766
2010 Households	821	3,143	13,310
Average Household Size	2.4	2.3	2.4
Median Age	39.2	31.8	43.0
Households with 1+ Persons with a Disability	35.9%	30.3%	26.9%
Population by Race: "White Alone"	94.7%	86.4%	91.6%
2020 Population, "White Alone"	94.7%	87.2%	92.5%
2010 Population, "White Alone"	98.6%	93.7%	96.8%
Population by Ethnicity: "Hispanic Origin"	2.8%	8.4%	4.6%
2020 Population, "Hispanic Origin"	2.7%	8.1%	4.1%
2010 Population, "Hispanic Origin"	1.8%	6.2%	2.9%
Median Household Income	\$58,272	\$63,305	\$76,189
Per Capita Income	\$31,059	\$31,062	\$40,742
Households with Income Below Poverty Level	10.3%	15.4%	9.6%
Highest Educational Attainment:			
Less than High School Graduate	7.1%	8.0%	7.1%
High School Graduate or GED/Alternative Credential	55.0%	37.0%	37.2%
Bachelor's Degree	6.5%	17.6%	17.3%
Graduate/Professional Degree	4.2%	10.8%	9.4%
Unemployment Among Population Age 16 and Older	6.8%	4.3%	4.2%

Sources: Esri Business Analyst, US Census Bureau, ACS 5-year estimates (2018-2022 for Fremont, 2019-2023 for Steuben County and Angola)

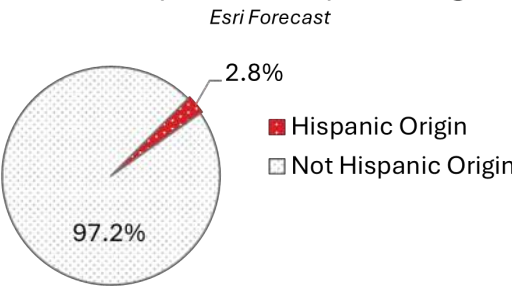
Racial and Ethnic Minority Populations

The percentage of the Fremont population who identifies as a race other than “White Alone” has increased since 2010, as has the percentage of those who identify as having “Hispanic Origin.” While these changes have not been so drastic as to cause general alarm, the trend should be noted to acknowledge possible cultural shifts to come.

2024 Population by Race (Esri Forecast)

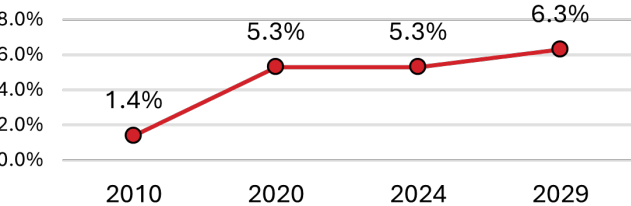


2024 Population Hispanic Origin (Esri Forecast)



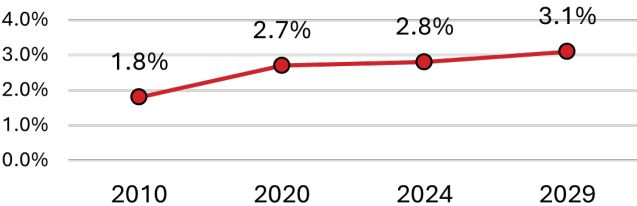
Population Race, Not "White Alone"

Census and Esri Forecasts



Population Ethnicity, Hispanic Origin"

Census and Esri Forecasts

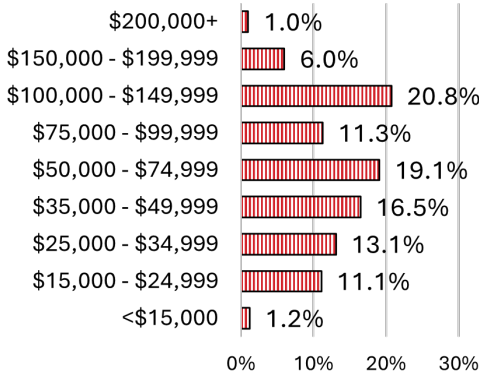


Income and Poverty

Median household income (\$58,272) and income per person (\$31,059) for residents of Fremont are both lower than the County overall and the City of Angola. Over 10% of households in Fremont have income below the poverty level, which is determined by household size and other factors.

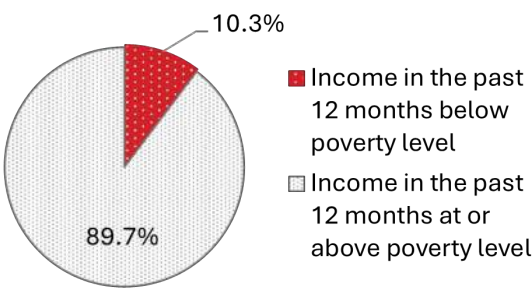
2024 Households by Income (Esri Forecast)

Esri Forecast



Households by Poverty Status (2018-2022 ACS Estimate)

2018-2022 ACS Estimate



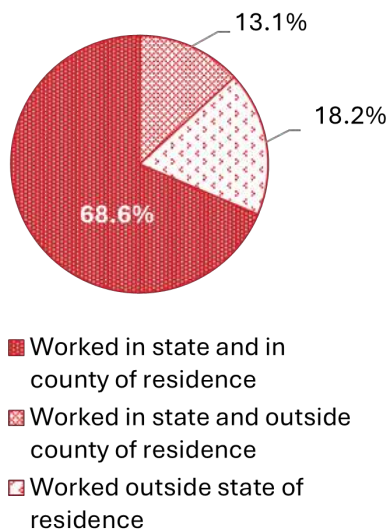
Education and Employment

Approximately 7% of Fremont's population has not completed a high school education. This is similar to the populations of Angola and Steuben County. More than half (55%) of the population has a high school diploma or GED/alternative credential as their highest educational attainment. This is a higher percentage than Angola and the County, which each have higher rates of students attaining higher education degrees.

Most of the employed population in Fremont works in the manufacturing or services industries, with each industry employing approximately 37% of the Fremont labor force. Occupations in these industries are largely in production and direct services, but also include transportation, professional, administrative support, and management positions.

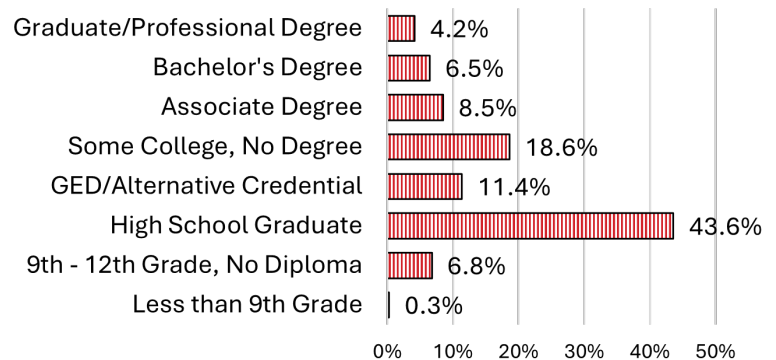
Most workers living in Fremont work within Steuben County. However, a sizable percentage work in a different county in Indiana (13%) or in a different state (18%). Fremont is located only a few miles from both the Michigan and Ohio borders, so intra-state commuting is to be expected.

Workers Age 16+ by Place of Work
2018-2022 ACS Estimate



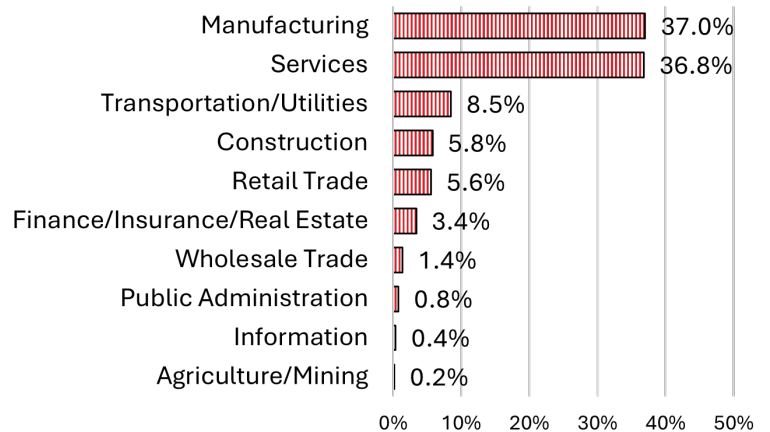
2024 Population 25+ by Educational Attainment

Esri Forecast



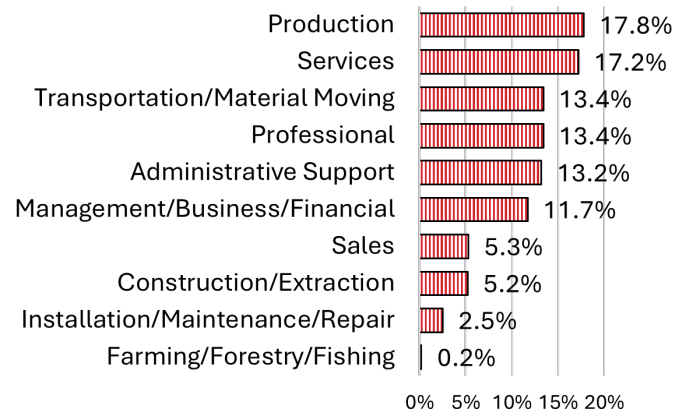
2024 Employed Population 16+ by Industry

Esri Forecast



2024 Employed Population 16+ by Occupation

Esri Forecast



PUBLIC PARTICIPATION

Engagement Timeline

Plan Steering Committee

Parks Committee

Community Character Survey

Parks Use Survey

Parks Plan Workshop

Draft Plan Public Review and Open House

Public Hearing at Plan Adoption

Engagement Timeline

February 20

Steering Committee Meeting

February 26–March 31

Community Character Survey

March 19–May 12

Parks Use Survey

April 8

Parks Committee Meeting

April 24

Steering Committee Meeting

August 7

Parks Plan Workshop

September 9

Parks Committee Meeting

October 2

Steering Committee Meeting

October 17–November 16

30-Day Public Review Period

October 30

Public Open House for Draft Plan

December 16

Public Hearing and Plan Adoption

Plan Steering Committee

A volunteer Steering Committee engaged with the planning team at multiple points throughout the process to review progress and provide direction. The role of this committee was to provide guidance on major plan decisions, such as coordination of community engagement activities and strategies for plan implementation. Members were selected as a group of advisors for their local knowledge and expertise in town planning, parks and recreation, economic development, and business ownership.

The Steering Committee met three times throughout the plan's development with the following objectives:

- February 20: Review the Town's existing Parks and Recreation Plan and Comprehensive Plan for key goals and priority actions to bring into the updated plan.
- April 24: Discuss results of the Parks Use Survey, Community Character Survey, and the parks inventory and ADA assessments. Revise proposed plan goals and discuss activities for the upcoming workshop.
- October 2: Review full draft of the proposed comprehensive plan update.

Parks Committee

The Parks Committee provided critical insight into the priorities for the town's recreational opportunities. This group met twice to discuss recent projects and events, and to identify specific goals and actions for the next 5 years. On October 22, the Parks Committee voted to recommend approval of the Parks and Recreation Master Plan to the Town Council.

Community Character Survey

An online survey was distributed communitywide early in the planning process to seek insight into what is important to Fremont residents and stakeholders. The survey was open February 26 to March 31 and received 155 responses. Questions asked respondents to identify why they choose to live in Fremont, if they plan to stay, how likely they would be to recommend living in Fremont to someone else, what amenities are important to them, and how they feel about town growth through housing and business development.

Respondents had varied perspectives as residents, parents of school children, local employees, and visitors to the town's businesses, events, and parks. Many respondents are long-time residents, but representation also came from those who have lived in Fremont for only a few years. Households with young adults (age 18-24) and senior citizens (age 75+) were notably missing from the responses.

90 respondents requested notifications about the plan progress and events. Emails were sent to this group to inform them of the workshop, open house, and public meetings related to the Plan's adoption. Additional findings from this survey are incorporated throughout the Plan document. Full summary results are included in the appendix.

Parks Use Survey

A second online survey was distributed to the Fremont community to seek insight specifically into the use of local parks and recreation facilities. The survey was open March 19 to May 12 and received 48 responses. Questions asked respondents to identify how often they visit each of the Fremont parks, what activities they engage in, what new recreational opportunities they would like the town to offer, how well current town parks and recreation facilities meet their expectations, and what their priorities are for the parks over the next 5 years.

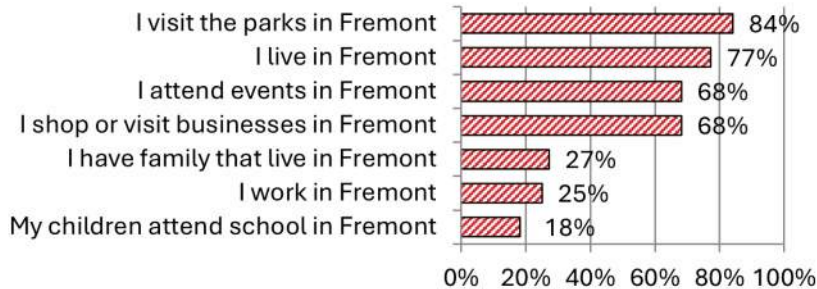
A higher percentage of respondents to this survey are newer residents to Fremont than those who responded to the Community Character Survey, with over 35% of respondents having lived in town for less than 5 years, compared to 17% of the Community Character Survey. In addition, a higher percentage (18%) of the respondents to this survey were young adults (age 18-24), compared to 9% of those responding to the Community Character Survey.

16 respondents requested notifications about the Parks and Recreation Plan progress and events. Emails were sent to this group to inform them of the workshop, open house, and public meetings related to the Plan's adoption. Additional findings from this survey are incorporated throughout the Plan document. Full summary results are included in the appendix.

Who responded to the **Parks Use Survey**? (48 total responses)

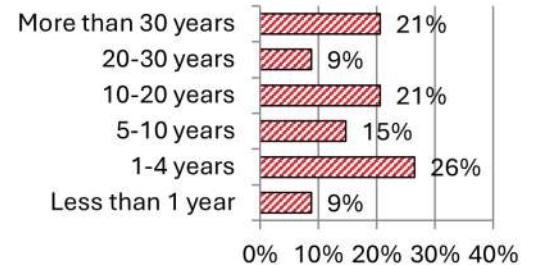
Please tell us what your interest is in Fremont.
(Check all that apply)

(2025 Fremont Parks Use Survey, 44 Responses)



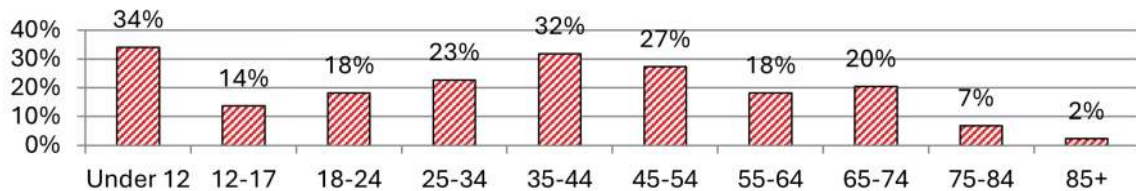
If you are a Fremont resident, how long have you lived here?

(2025 Fremont Parks Use Survey, 34 Responses)



What ages make up your household? (Select all that apply)

(2025 Fremont Parks Use Survey, 44 Responses)



Parks Plan Workshop

On August 7, the planning team and Steering Committee hosted a 4-hour public workshop event at Town Hall. A total of 16 people attended, in addition to 2 Town staff and 3 Steering Committee members. The planning team led attendees in conversation about the proposed Parks Plan goals and possible improvements by park. Participants were invited to add their own thoughts in discussion with the team or by writing on posted papers for each park. Posters were also set up to present results from the two communitywide surveys, parks inventory, and a description of the planning purpose and process.

Draft Plan Public Review and Open House

A full draft of the Fremont Parks and Recreation Master Plan was made available to the public for review from October 13–November 10. The Town hosted an open house on October 30, inviting the public to discuss the draft plan in person. A total of 6 people attended, in addition to 2 Town staff and 2 Steering Committee members.

Plan Adoption

Following the public review period and Parks Committee approval, the Fremont 2026-2030 Parks and Recreation Master Plan was adopted by resolution on December 16, 2025, by the Town Council. A copy of the resolution is included in the appendix.

FREMONT PARKS

Inventory Overview

Fremont Pickleball Courts

Follett Estates Park

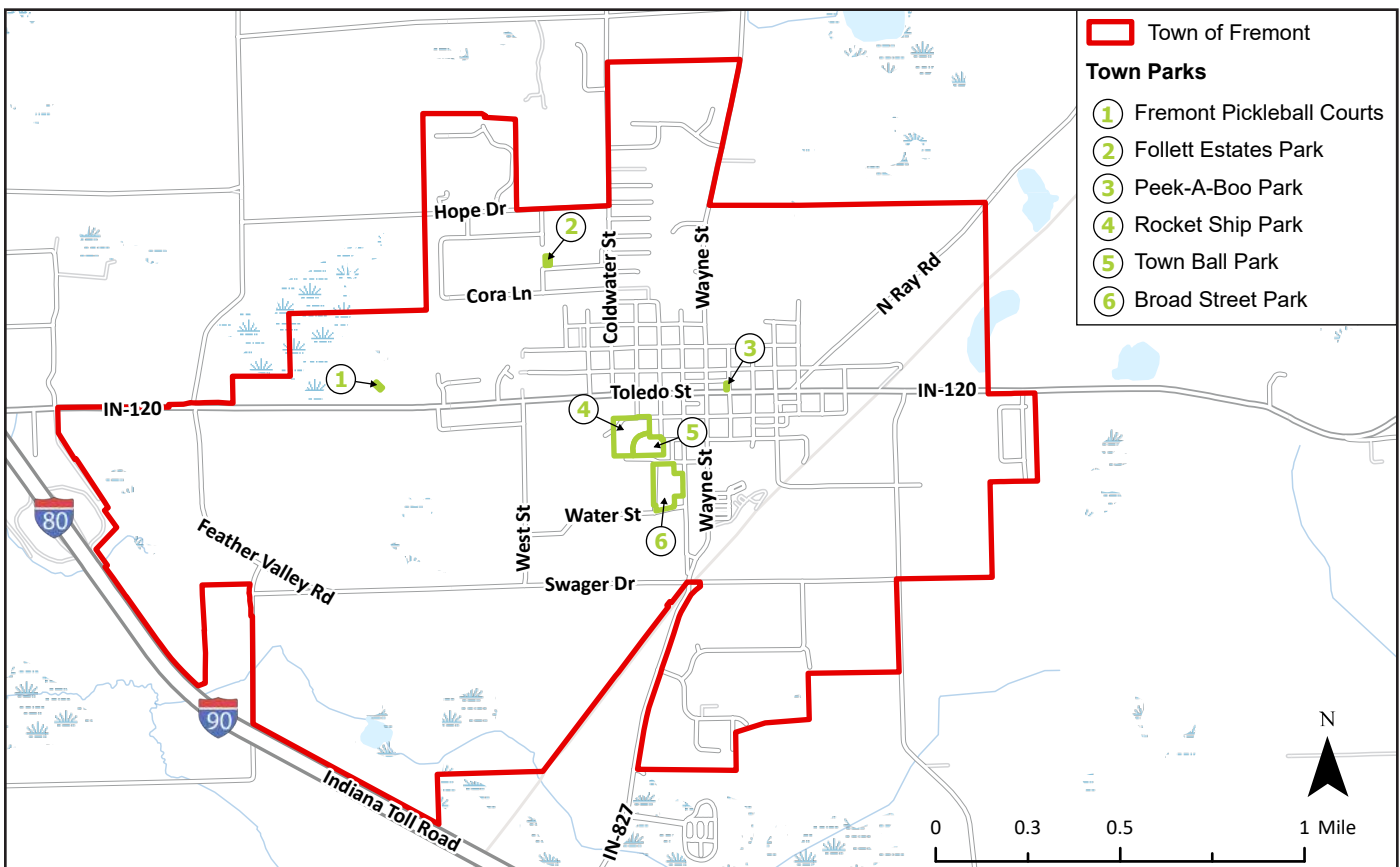
Peek-A-Boo Park

Rocket Ship Park

Town Ball Park

Broad Street Park

Other Recreation Facilities in the Area



Inventory Overview

	Fremont Pickleball Courts	Follett Estates Park	Peek-A-Boo Park	Rocket Ship Park	Town Ball Park	Broad Street Park
Amenities						
Benches		✓	✓ ♿	✓ ♿		✓
Bike Parking Spaces				✓ ♿	✓	
Bleachers					✓ ♿	
Dog Waste Bag Dispenser						✓
Drinking Fountains					✓ ♿	
Picnic Tables				✓ ♿		✓
Restrooms				✓ ♿	✓ ♿	
Trash Cans	✓ ♿	✓	✓ ♿	✓ ♿	✓ ♿	✓
Vehicle Parking Spaces	✓ ♿		✓ ♿	✓ ♿	✓ ♿	✓
General Recreation Spaces						
Climbing Structure				✓		
Dog Park						✓
Open Play Field						✓
Play Structure				✓		
Slide		✓		✓		
Splash Pad				✓		
Spring Riders		✓		✓		
Swing		✓		✓		
Sports & Exercise						
Basketball Hoop						✓
Batting Cage					✓	
Diamond Field					✓	
Exercise Equipment				✓		
Pickleball Court	✓ ♿					
Skate Park						✓
Tetherball Pole				✓		
Volleyball Court				✓		
Community Gathering Structures						
Open-Air Shelter / Pavilion				✓ ♿		
Pergola			✓ ♿			

Notes:

✓ = Available at this park

♿ = On an accessible route

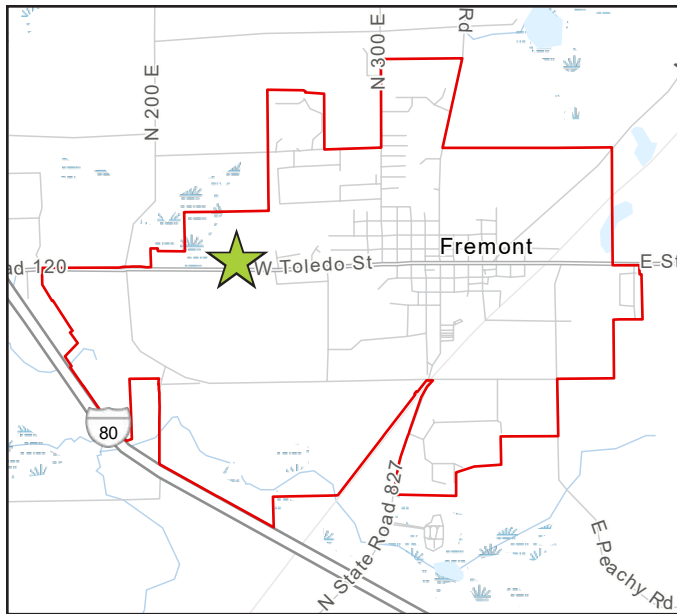
An accessible route is noted if there is a stable surface (usually paved) that is at least 36 inches wide and is clear of obstacles.

Excellent Condition: Asset is in new, nearly new, or repaired to new condition.

Good Condition: Only minor deterioration or defects are evident. Minor maintenance may be necessary.

Fair Condition: Moderate wear and tear, but the asset is not significantly affected. It may require moderate maintenance and more frequent tracking.

Poor Condition: Serious deterioration or defects noted that may affect the asset's functionality. Repairs and replacements are needed.



Fremont Pickleball Courts

Location: East Toledo Street (Vistula Park)

Approximate Size: 0.13 acre

Year Opened: 2024

Primary Purpose/Use: Pickleball

Programming and Activities Available: Pickleball

The Town of Fremont recently installed and manages two pickleball courts, located within the larger Vistula Park, which is owned and maintained by Fremont Community Schools. Parking next to the courts is not owned by the Town, but there is an easement for public use. The courts are open seasonally.

Note: The Pickleball Courts were not listed separately on the Parks Use Survey to request visit frequency. See page 40 for the frequency of visits to Vistula Park.



SUMMARY OF ADA REVIEW

An accessible route provides direct access from the parking to the courts. There are no handicapped vehicle parking spaces designated.

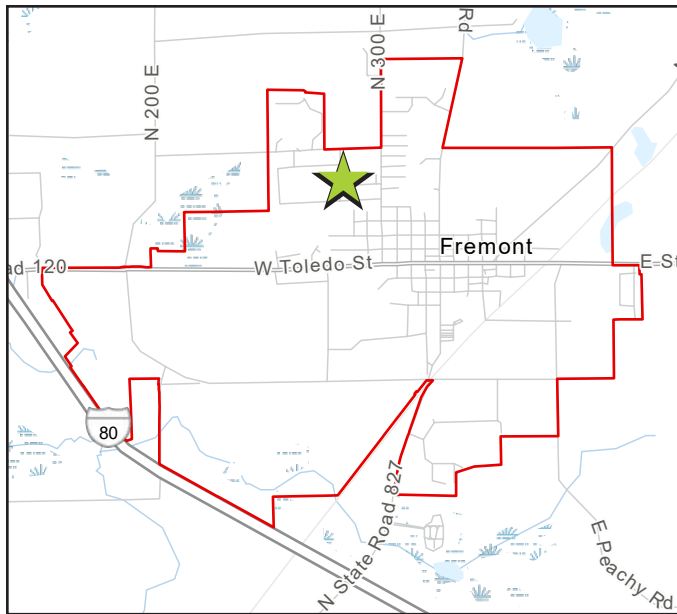
COMMUNITY-IDENTIFIED NEEDS:

- More courts
- Lighted courts
- Shelter
- Bathrooms
- Drinking Fountain
- Continue to develop programs with the school
- Organized clubs
- Online sign up

FREMONT PICKLEBALL COURTS INVENTORY

	Quantity	Condition	On Accessible Route?
Amenities			
Trash Cans	1	Excellent	Yes
Vehicle Parking Spaces	19	Good	Yes
Sports & Exercise			
Pickleball Courts	2	Excellent	Yes





Follett Estates Park

Location: Follett Lane

Approximate Size: 0.24 acres

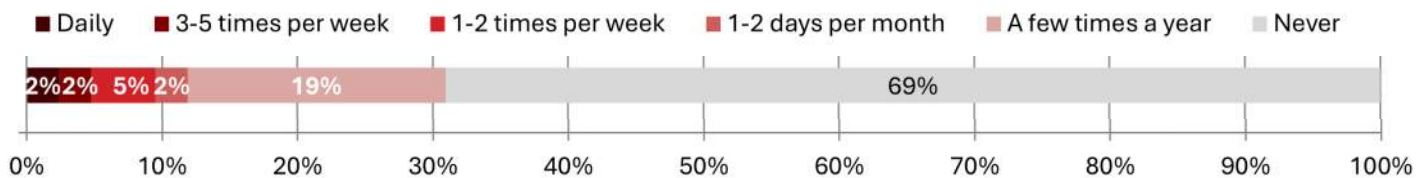
Year Opened: Unconfirmed (1990's)

Primary Purpose/Use: Neighborhood playground

Programming and Activities Available: None

Follett Estates Park was originally set aside as an area for public park when the subdivision was built. The land has not been officially transferred to the Town, but the Town maintains the property. There is no off-street parking, but on-street parking is possible along Follett Lane. This park location is expected to be temporary, with a larger park being considered to the west of this lot on property the Town has purchased. Pages 26-27 show the location and considerations for the future park.

How often have you visited Follett Estates Park in the last 12 months? (42 Responses)



This park is in fair condition, with minimal amenities.

SUMMARY OF ADA REVIEW

There are no accessible routes or facilities on this site.

COMMUNITY-IDENTIFIED NEEDS:

- Maintain equipment
- Add more equipment
- Add climbing structure
- Add shade

FOLLETT ESTATES PARK INVENTORY

	Quantity	Condition	On Accessible Route?
Amenities			
Benches	1	Fair	No
Trash Cans	1	Excellent	No
General Recreation Spaces			
Slide	1	Fair	No
Spring Riders	1 unit with 4 chairs 2 more detached	Fair	No
Swing	6	Fair	No





Follett Estates Future Park

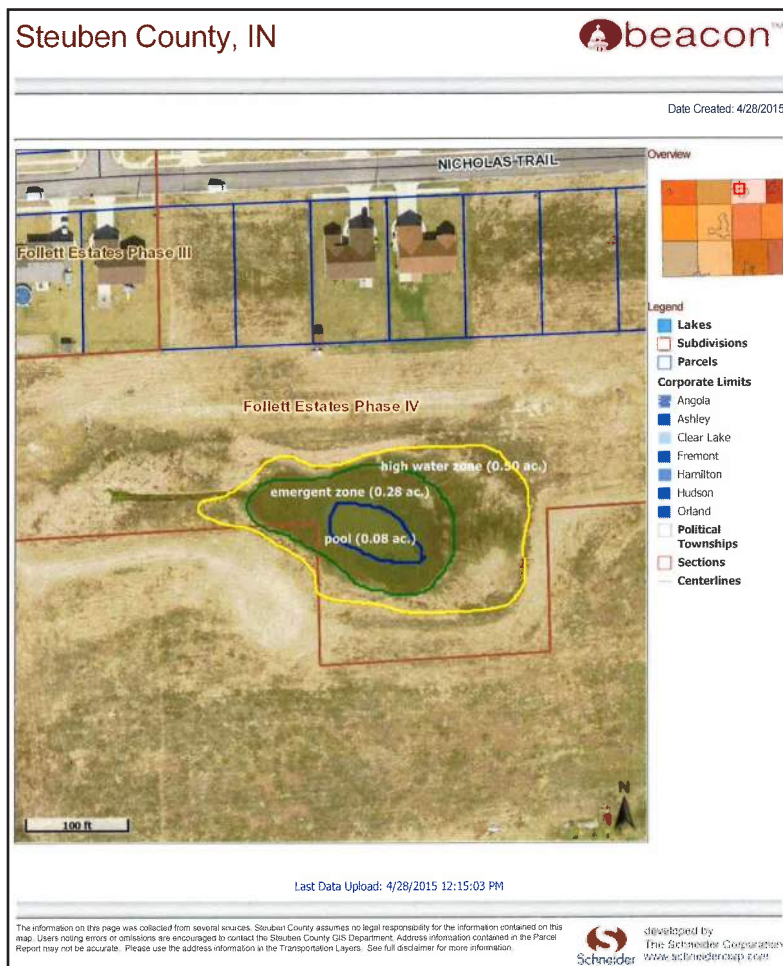
Location: Between Nicholas Trail, Cora Lane, and Follett Lane

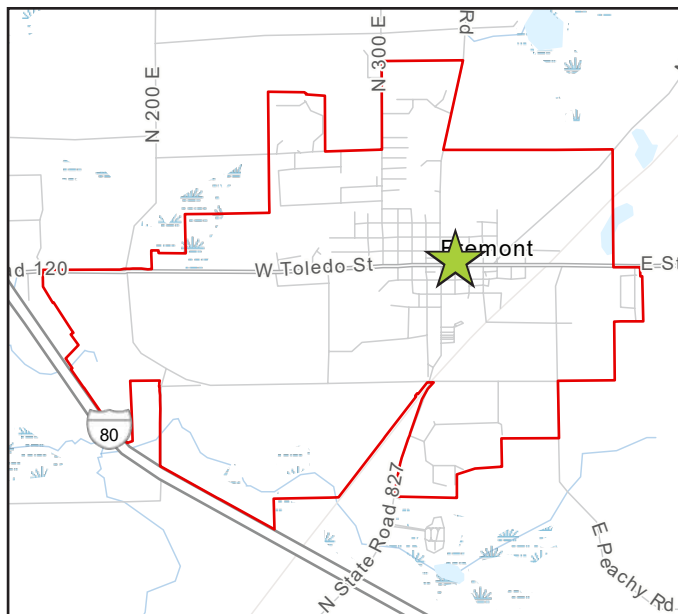
Approximate Size: 5.6 acres

The Town is considering options for a new, expanded park within the Follett Estates subdivision, west of the existing park. This land has been purchased and is already within its maintenance responsibilities. While there are no proposed plans at this time, the stated intention is to include an aspect of wildlife habitat restoration.

This area includes approximately 1 acre of wetland. In 2021, 2.9 acres surrounding the wetland were planted in native flowers and grasses as an Eagle Scout project.







Peek-A-Boo Park

Location: Corner of Toledo Street and Pleasant Street (downtown)

Approximate Size: 0.05 Acres

Year Opened: 2020

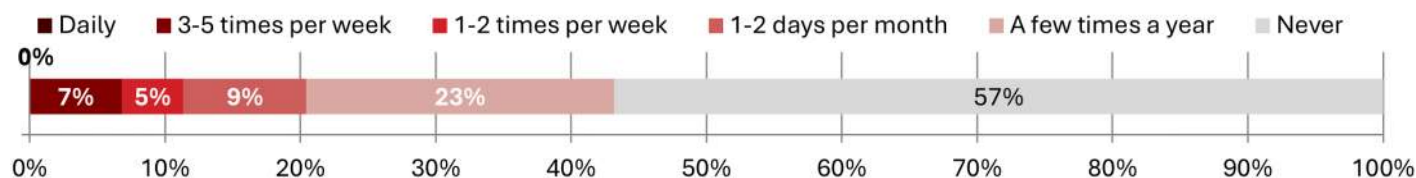
Primary Purpose/Use: Downtown pocket park

Programming and Activities Available: None

In 2013, the Town acquired the lot where this pocket park is located in downtown. At the time, a building stood on the site, but was in disrepair. The Town demolished the building and, in 2019, installed this park.

The park is just around 2,000 square feet and includes a pergola with lighting, a "bubbling" boulder water feature, stone and metal benches, planters and landscaping.

How often have you visited Peek-A-Boo Park in the last 12 months? (44 Responses)



SUMMARY OF ADA REVIEW

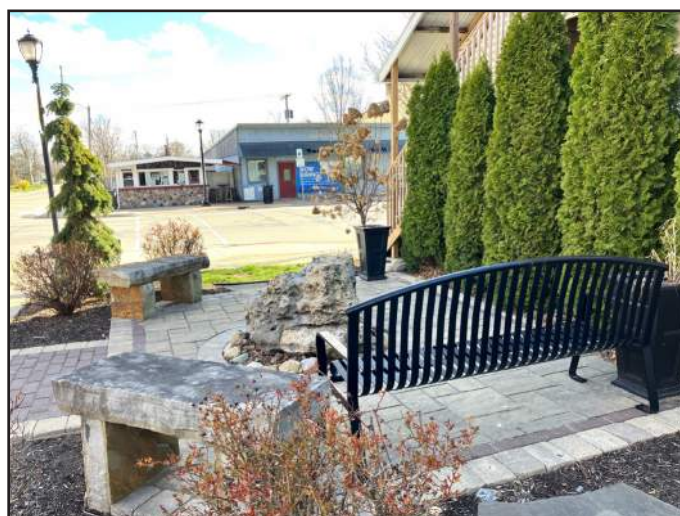
All amenities in this park are on an accessible route. The nearest designated handicapped vehicle parking space is across Toledo Street.

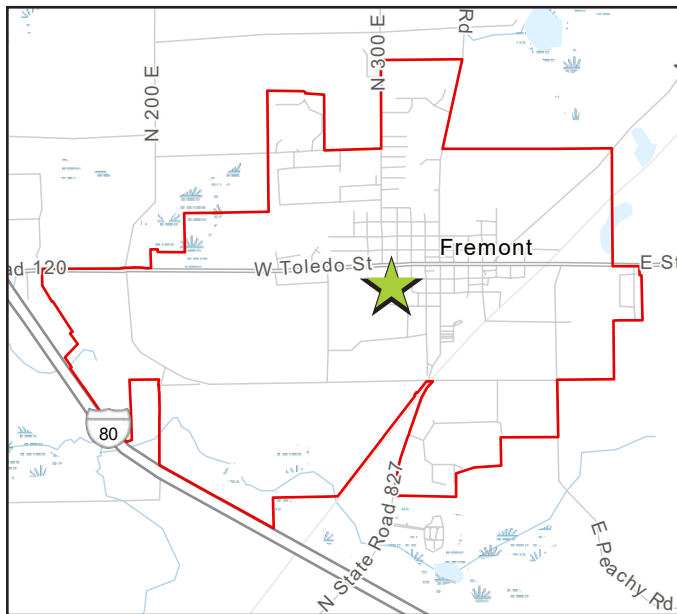
COMMUNITY-IDENTIFIED NEEDS:

- Add picnic tables

PEEK-A-BOO PARK INVENTORY

	Quantity	Condition	On Accessible Route?
Amenities			
Benches	Metal (3) Stone (2)	Excellent	Yes
Trash Cans	1	Excellent	Yes
Vehicle Parking Spaces	On street	Good	Yes
Community Gathering Structures			
Pergola	1	Excellent	Yes





Rocket Ship Park

Previously known as Fremont Town Park

Location: West Albion Street

Approximate Size: 4.9 acres

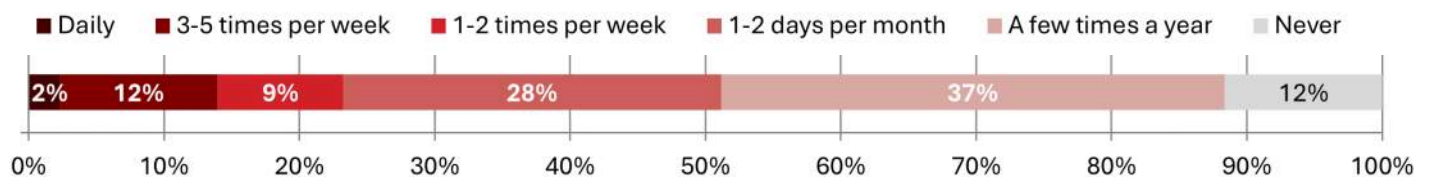
Year Opened: Unconfirmed

Primary Purpose/Use: Neighborhood park

Programming and Activities Available: Back to School event, private events at the pavilion, playground, splash pad, exercise equipment

This park is the Town's main space for community gathering and recreation opportunities. Its central location to the town puts it close to surrounding neighborhoods and the downtown. The new splash pad has been a particularly popular destination.

How often have you visited Rocket Ship Park in the last 12 months? (43 Responses)



Note that the previous Parks and Recreation Plan included the Town Ball Park as part of this park.

SUMMARY OF ADA REVIEW

The pavilion, bathrooms, and two benches are on accessible routes. All other spaces and amenities at this park are not. Both bathrooms are handicapped accessible and 1 vehicle parking space is designated handicapped accessible by the entrance.

COMMUNITY-IDENTIFIED NEEDS:

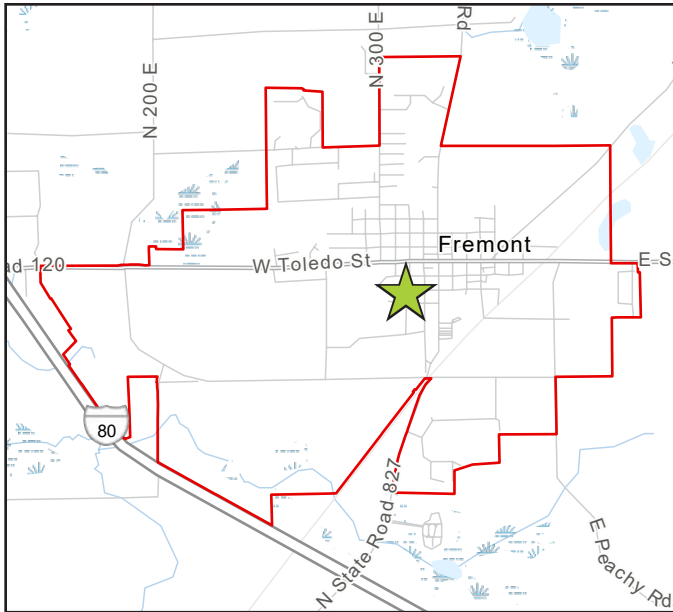
- Upgrade grass and dirt
- Upgrade facilities
- Add irrigation
- Expand splash pad
- New playground structure
- Restore the spring riders
- Add mini amphitheater for live music events

ROCKET SHIP PARK INVENTORY

	Quantity	Condition	On Accessible Route?
Amenities			
Benches	5	Excellent (4) Good (1)	Yes (2)
Bike Parking Spaces	18	Good	Yes
Picnic Tables	10	Fair	Yes
Restrooms	1 each (male and female)	Good	Yes
Trash Cans	3	Good	Yes
Vehicle Parking Spaces	21 (shared with Water Dept)	Good	Yes
General Recreation Spaces			
Climbing Structure	1	Fair	No
Play Structure	1	Fair	No
Slide	1	Good	No
Splash Pad	1	Good	No
Spring Riders	1 unit with 4 seats attached 2 more detached	Fair	No
Swing	1 tire swing 1 "see-me" swing 3 toddler swings 3 regular swings	Fair	No
Sports & Exercise			
Exercise Equipment	Leg swing (1) Arm pull (1) Parallel bars (1)	Excellent	No
Sand Volleyball Court	1	Fair	No
Tetherball Pole	1	Good	No
Community Gathering Structures			
Open-Air Shelter / Pavilion	1	Fair	Yes







Town Ball Park

Location: Coffin Street and Hardy Street

Approximate Size: 2.7 acres

Year Opened: Unconfirmed

Primary Purpose/Use: Community team sports

Programming and Activities Available: Softball, Little League, T-ball

This field is primarily used for softball games and little league and T-ball team practices. The field is lighted and has two dugouts and two bleachers. It is mostly surrounded by a 6-foot chainlink fence.

A concessions stand and bathrooms are located centrally between the bleachers. Concessions are managed by the Youth League. A new scoreboard, dugouts, and batting cage have been installed since the previous Parks and Recreation Plan was adopted.

Note: The Town Ball Park was not listed separately on the Parks Use Survey to request visit frequency.



SUMMARY OF ADA REVIEW

Bleachers, restrooms, and the concessions stand are all on an accessible route. Both bathrooms are handicapped accessible and 1 handicapped accessible vehicle parking space is designated at the entrance. While the drinking fountain is on an accessible route, it does not meet standards as an accessible facility.

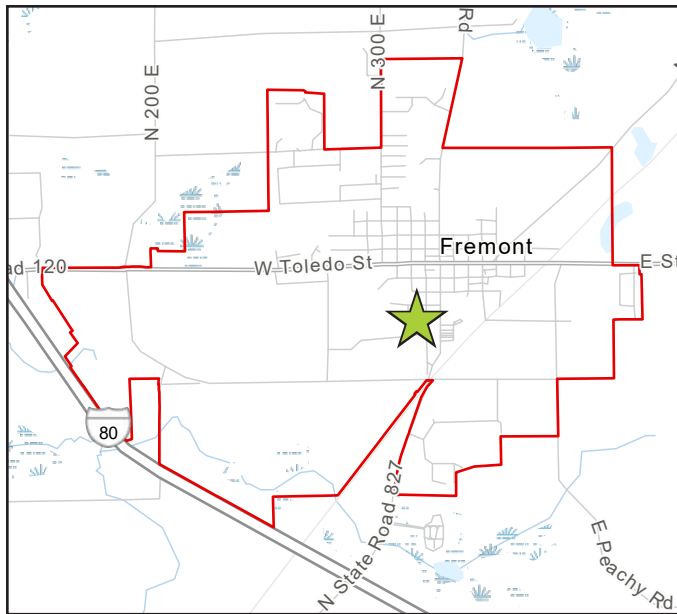
COMMUNITY-IDENTIFIED NEEDS:

- Infield maintenance
- Outfield maintenance
- Fertilize and weed control
- Add sprinklers
- Post appropriate use and behavior expectations

TOWN BALL PARK INVENTORY

	Quantity	Condition	On Accessible Route?
Amenities			
Bike Parking Spaces	18	Good	No
Bleachers	2	Good	Yes
Drinking Fountains	1	Fair	Yes
Restrooms	2	Good	Yes
Trash Cans	2	Good	Yes
Vehicle Parking Spaces	Gravel / No marked spaces except for 1 handicapped accessible	Fair	Yes
Sports & Exercise			
Batting Cage	1	Good	No
Diamond Field	1	Good	No





Broad Street Park

Location: Pearl Street, Broad Street, Coffin Street, and Water Street

Approximate Size: 5.3 acres

Year Opened: 2004 (Skate Park), 2016 (Dog Park)

Primary Purpose/Use: Dog Park, Skate Park, basketball hoop, picnic tables, open field

Programming and Activities Available: Woofstock

The main feature of this park was originally a skate park: a 500-square foot concrete pad with two ramps, a rail, and a table. A fenced-in dog park was installed in 2016. Two picnic tables are available near the pond on the east part of the site.

Broad Street Park was historically a waste site, therefore it cannot be used for residential structures or for harvesting water from the ground due to environmental concerns. Otherwise, the site is safe for recreational purposes.



SUMMARY OF ADA REVIEW

There are no accessible routes or facilities on this site.

COMMUNITY-IDENTIFIED NEEDS:

- Better parking availability
- Public swimming pool

Skate Park

- Upgrade facilities
- Ramps for beginners

Dog Park

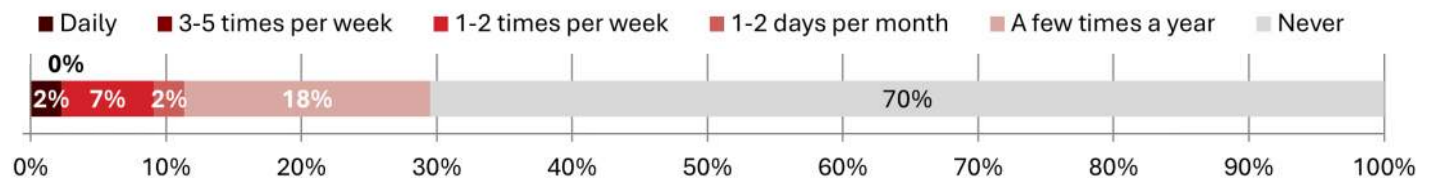
- Install a shelter for shade and wind break
- Add a water source
- Add gravel or concrete at the entrance (gets muddy)
- Regularly remove walnuts on the ground
- Add lighting

BROAD STREET PARK INVENTORY

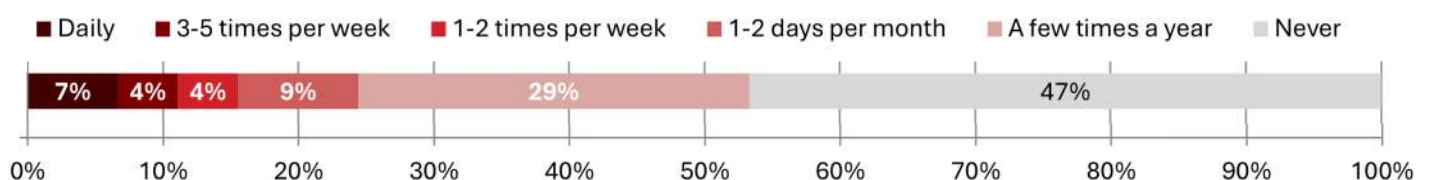
	Quantity	Condition	On Accessible Route?
Amenities			
Benches	2	Excellent (1) Good (1)	No
Dog Waste Bag Dispenser	1	Good	No
Picnic Tables	2	Good	No
Trash Cans	1	Excellent	No
Vehicle Parking Spaces	Unmarked spaces	Fair	No
General Recreation Spaces			
Dog Park	1	Good	No
Open Play Field	1	Good	No
Sports & Exercise			
Basketball Hoop	1 hoop	Fair	No
Skate Park	1	Fair	No



How often have you visited Broad Street Skate Park in the last 12 months? (44 Responses)



How often have you visited Broad Street Dog Park in the last 12 months? (45 Responses)







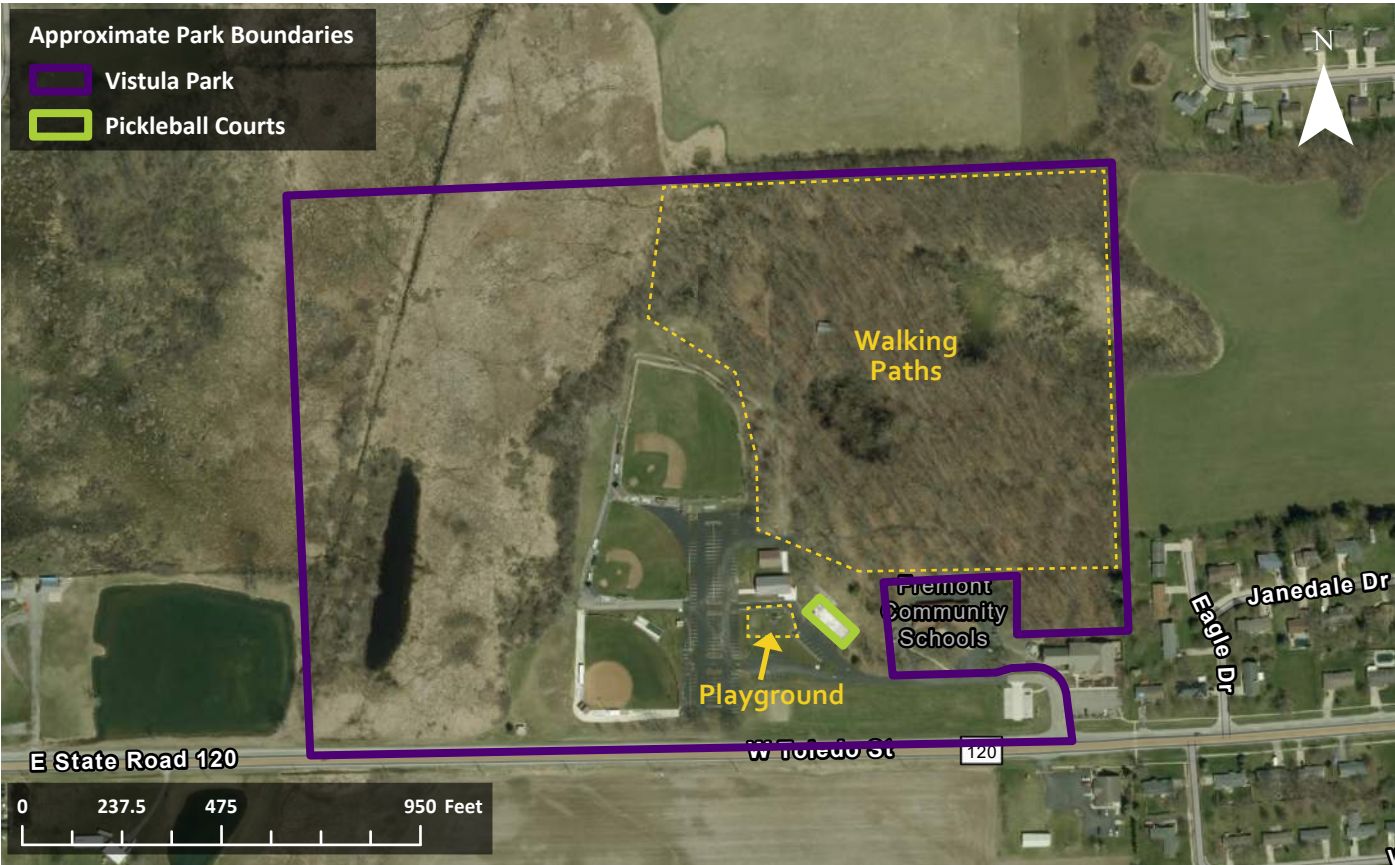
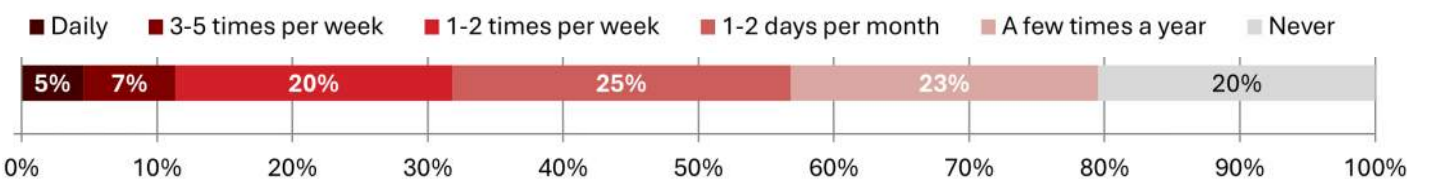
Other Recreation Facilities in the Area

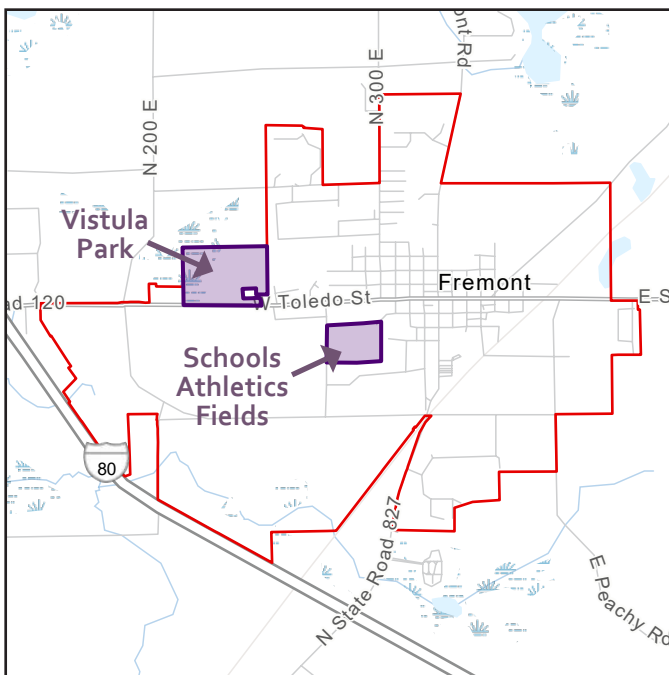
In addition to the recreation opportunities provided by the Town of Fremont, residents have access to many other parks and recreation facilities in the area, including those managed by Fremont Community Schools, Indiana and Michigan State DNRs, Steuben County, City of Angola, and conservation agencies. Many respondents to the Parks Use Survey indicated they visit Pokagon State Park (6 miles away), Angola city parks (8 miles away), Trine State Recreation Area and Marsh Lake Wetlands Area (both, 5 miles away), and Steuben County Park (8 miles away).

Vistula Park

Notably, the most frequented park in Fremont, according to the Parks Use Survey, is Vistula Park, which is owned and maintained by Fremont Community Schools. This 59-acre property has facilities for baseball, softball, basketball (half-court only), and sand volleyball, in addition to the town-managed pickleball courts. The site includes a playground and two open-air pavilions. Approximately 1 mile of walking trail winds through a 20-acre wooded area at the north section of the property. The trail was the most frequently mentioned facility by respondents to the Parks Use Survey. It is the only designated walking path within town limits.

How often have you visited Vistula Park in the last 12 months? (43 Responses)



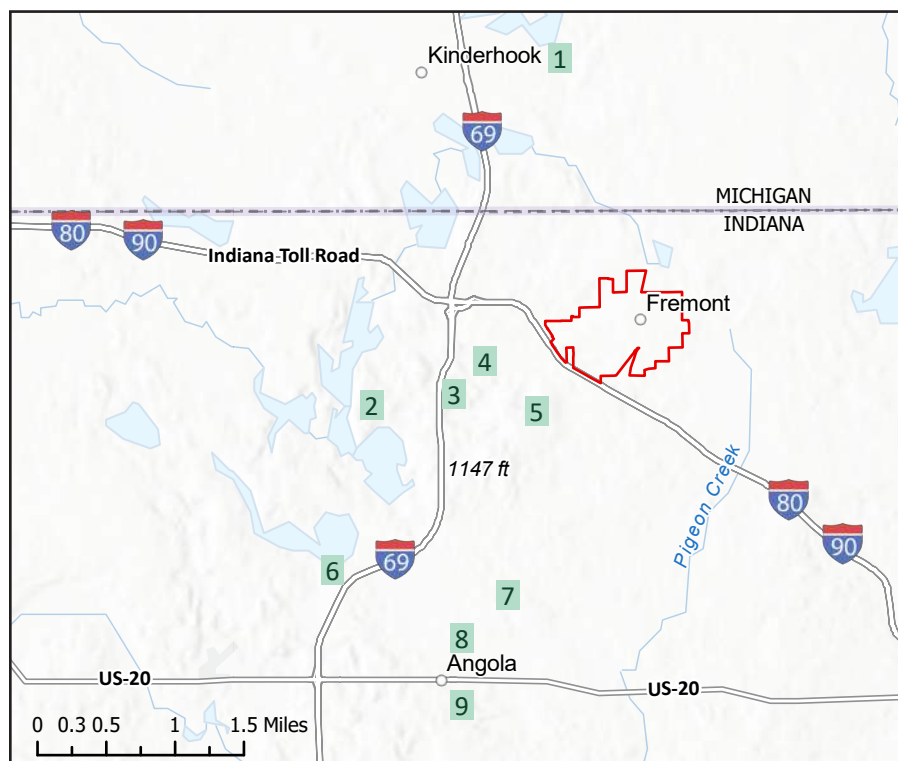


School Sports

Students at the Fremont Schools have opportunities to join teams for the following sports:

- Football
- Flag football
- Volleyball
- Cross Country
- Golf
- Tennis
- Basketball
- Wrestling
- Cheerleading
- Baseball
- Softball
- Track & Field

Regional Parks and Recreation Areas



1. Coldwater Lake State Park

568 Copeland Road, Coldwater, MI
41.798927, -84.968261
400 acres. Boating and hunting.

2. Pokagon State Park

450 Lane 100 Lake James,
Angola, IN
41.707904, -85.030619
1,260 acres. Cross country skiing,
fishing, hiking, nature center,
picnicking, conference center,
playground, rental boats, sand
volleyball, basketball, swimming,
beach, toboggan run, saddle barn
with escorted rides, inn, cabins,
camping.

3. Trine State Recreation Area

145 West Feather Valley Road,
Fremont, IN
41.713661, -84.991924
200 acres. Boating, fishing, hiking,
biking, cabins, lodge, playground.

4. Marsh Lake Wetlands State Fish and Wildlife Area

1185 East Feather Valley Road,
Fremont, IN
41.718560, -84.987427
659 acres. Boating, fishing,
hunting.

5. McClue Nature Preserve

611 East 400 North, Angola, IN
41.700455, -84.977357
80 acres. Hiking and bird watching.

6. Steuben County Park

100 Lane 101 Crooked Lake,
Angola, IN
41.666011, -85.035180
Boating, fishing, camping,
playground, beach

7. Marion Woods Nature Preserve

805 Calvary Lane, Angola, IN
41.650148, -84.988575
19.5 acres. Hiking.

8. Fireman's Park

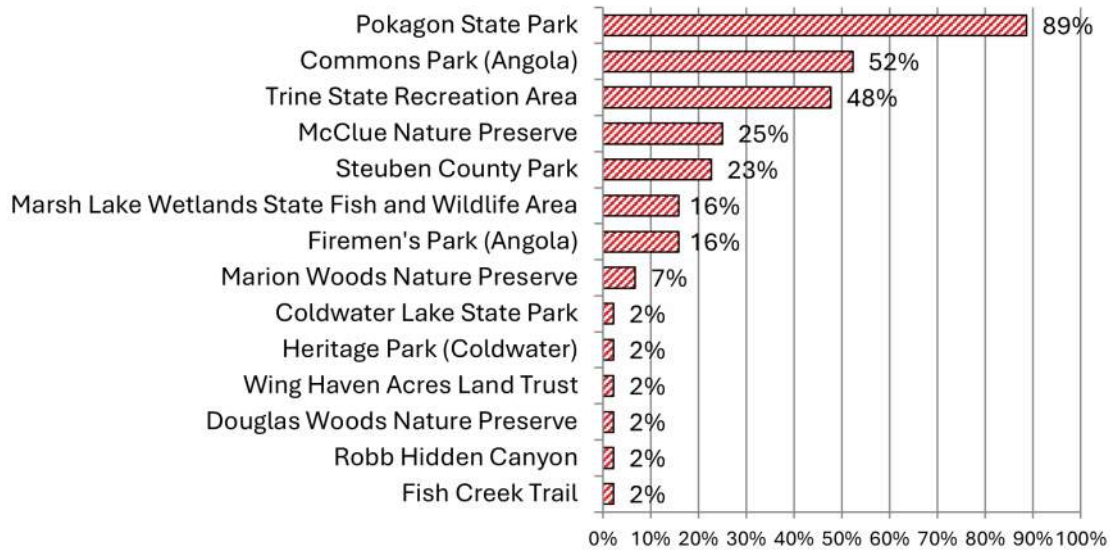
510 North Washington Street,
Angola, IN
41.640154, -84.995474
6 acres. Baseball, softball,
shuffleboard, volleyball, playground,
picnicking.

9. Commons Park

299 South John Street, Angola, IN
41.633225, -84.991058
100 acres. Playground, disc golf,
dog park, pavilions, bandstand,
basketball, volleyball, horse shoe,
soccer field, softball, picnicking,
walking trail, archery.

What other parks and recreation areas do you visit? (Select all that apply)

(2025 Fremont Parks Use Survey, 44 Responses)



Public marina. Photo from visitsraubcounty.com



Marion Woods Nature Preserve. Photo from acreslandtrust.org



Lake Lonidow (left) and toboggan run (right) at Pokagon State Park. Photos from www.in.gov/dnr/state-parks

NEEDS ANALYSIS

Community-Identified Needs

Facilities Inventory and ADA Assessment

National Recreation and Park Association Park Metrics

The planning process for this Parks and Recreation Master Plan update included a needs analysis from several sources, as described in this section.

Community-Identified Needs

Summarized results from the Parks Use Survey, Community Character Survey, and the Parks Plan Workshop, below and on the following pages, identify some general and specific needs for parks and recreation in Fremont.

KEY FINDINGS:

- Survey respondents feel the town's priorities should be in updating, renovating, and maintaining the existing facilities.
- Additional recreation options and improved accessibility for people with mobility challenges are lower priority, but more important than developing new parks.

What do you think should be the priority for Fremont parks in the next 5 years?

(2025 Fremont Parks Use Survey, 44 Responses)



Additional priorities stated in the Parks Use Survey and Parks Plan Workshop:

- Expand the budget
- Establish a summer director to oversee the parks and run the softball/baseball league
- I would love some butterfly/pollinator/native plant gardens
- Trails
- Summer program through the town - baseball and softball programs
- Maybe some more patrolling of our park areas
- Need a year around facility with walking track, basketball, volleyball, pickleball, community room (parties, card playing, etc.)
- Regular removal of the walnuts on the ground in the dog park (potentially toxic/choking hazard for the dogs that use the park.)
- Planting trees and adding flowers would be nice.
- Making sure people keep their dogs leashed.
- Swimming - there are no quality public access sites besides Pokagon.
- Ice skating - existing portable rink is in storage
- Summer programs for our youth (sports / crafts / music / art)
- Yoga in park
- Public pool
- Outdoor movie theater - drive-in would draw crowds & boost economy

The following are specific needs identified for each park:

FREMONT PICKLEBALL COURTS

- More courts
- Lighted courts
- Shelter
- Bathrooms
- Drinking Fountain
- Continue to develop programs with the school
- Organized clubs
- Online sign up

FOLLETT ESTATES PARK

- Fix broken equipment
- Add more equipment
- Add climbing structure
- Add shade

PEEK-A-BOO PARK

- Add picnic tables

ROCKET SHIP PARK

- Upgrade grass and dirt
- Upgrade facilities
- Add irrigation
- Expand splash pad
- New playground structure
- Restore the spring riders
- Add mini amphitheater for live music events

TOWN BALL PARK

- Infield maintenance
- Outfield maintenance
- Fertilize and weed control
- Add sprinklers
- Post appropriate use and behavior expectations

BROAD STREET PARK

- Better parking availability
- Public swimming pool

Skate Park

- Upgrade facilities
- Ramps for beginners

Dog Park

- Install a shelter for shade and wind break
- Add a water source
- Add gravel or concrete at the entrance (gets muddy)
- Regularly remove walnuts on the ground
- Add lighting

KEY FINDINGS:

- Survey respondents value access to parks and recreation and are generally pleased with their access in Fremont.
- Survey respondents are generally pleased with the availability and maintenance of parks and recreation facilities in the community.

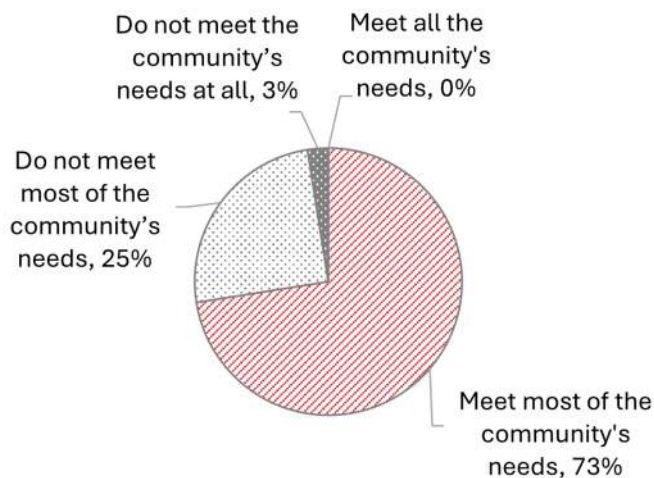
84%

of respondents say access to parks/open space/nature is "Important" or "Very Important" to their satisfaction with the quality of life in Fremont.

2025 Fremont Community Survey
138 Responses

How well do Fremont's park facilities meet the needs of the community overall?

(2025 Fremont Parks Use Survey, 40 Responses)



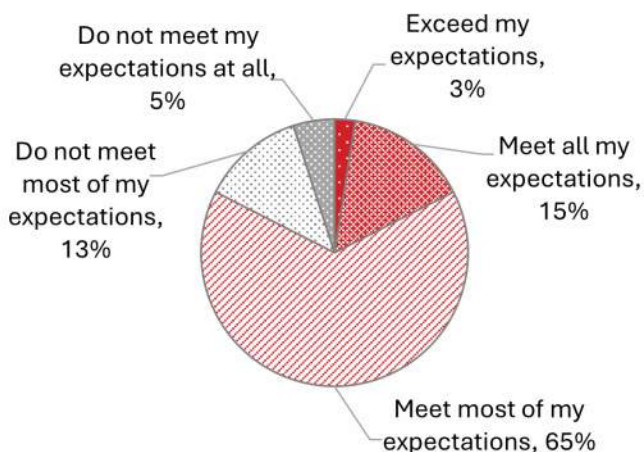
82%

of respondents say access to parks and recreational facilities in Fremont are "Good" or "Excellent"

2025 Fremont Community Survey
138 Responses

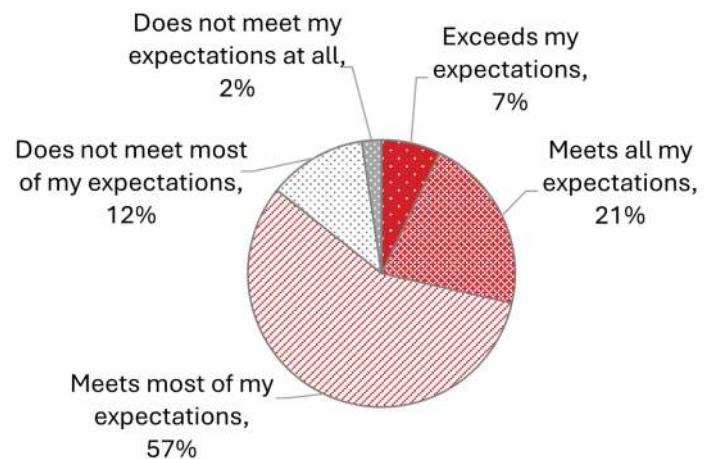
How well do the types of recreational facilities offered in the Fremont parks system meet your expectations?

(2025 Fremont Parks Use Survey, 40 Responses)



How well does the maintenance of the Fremont parks system meet your expectations?

(2025 Fremont Parks Use Survey, 42 Responses)

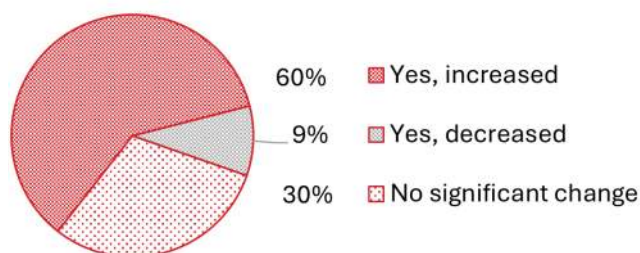


KEY FINDINGS:

- Most (60%) of survey respondents say they visit Fremont Parks more frequently now than they did 5 years ago.
- There is an assumption among some respondents that the parks are designed for children, not adults.

Has your frequency of visits to Fremont parks changed in the last 5 years?

(2025 Fremont Parks Use Survey, 43 Responses)



If you do not visit Fremont parks, or don't visit often, why not?

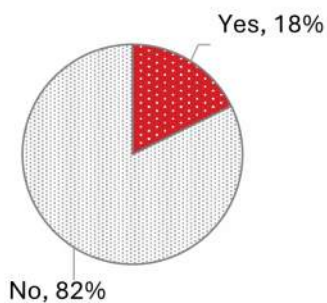
- Lack of access to public bathrooms. Nothing to do there for adults who don't have children.
- I have no children
- Weather, limited facilities and equipment.
- Mainly visit when grandsons are in town.
- I live in Angola on lake James and coach track at Fremont high school. I am just now becoming familiar with this area.

KEY FINDINGS:

- There is a need for improved accessibility to the parks facilities.

Does anyone in your household have a disability or mobility needs?

(2025 Fremont Parks Use Survey, 45 Responses)



If yes, how well do you feel the parks facilities meet these needs in particular?

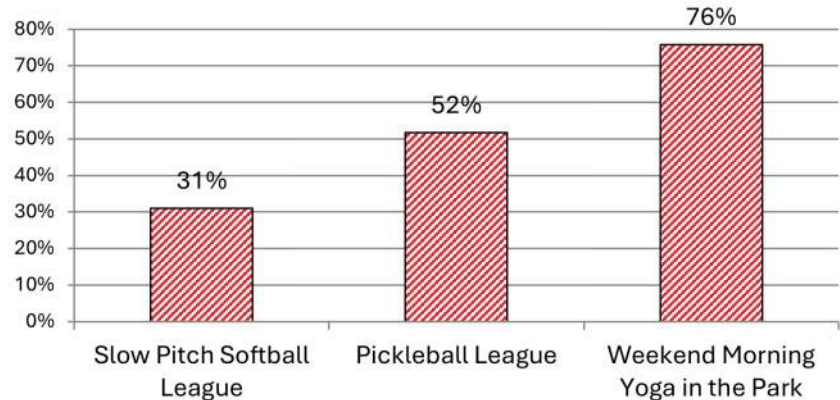
- ADA compliant are needed in some areas
- handicapped access
- Well.
- It's hard to get up into the park.
- Some areas are harder for them to access

KEY FINDINGS:

- There is support for programming in the parks, such as sports leagues, yoga, a farmers market, food truck events, outdoor movies, and live music.

Would you be interested in any of the following activities if they were provided in Fremont? (Select all that apply)

(2025 Fremont Parks Use Survey, 29 Responses)

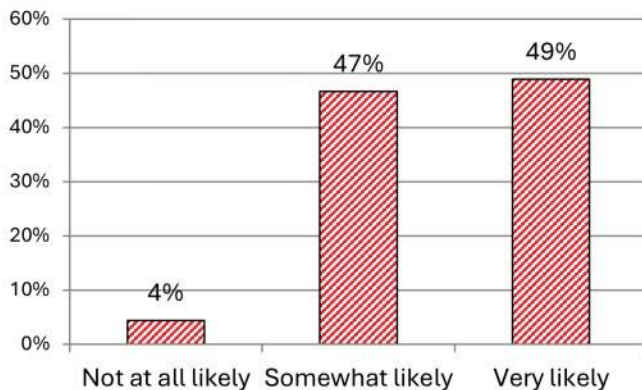


Are there other activities, events, or programs you would like to have available at Fremont parks?

- *I would love to see parks geared towards preteens and teens.*
- *Rebuild the volleyball court at Vistula*
- *More pickleball courts at Vistula*
- *Basketball courts at Vistula*
- *Upgrade(grass and dirt) at city park irrigation*
- *Art fairs, yoga, outdoor movies, gardens*
- *I would like more fitness machines at Rocket Park. I can show you pictures of equipment if you want suggestions.*
- *It would be nice to have a public pool!*
- *An upgraded skate park!*
- *Please keep taking care of the trails behind the library. They are my favorite and when my dog was young and healthy we walked several times a week. Love the book trails! Thanks fremont library for doing that.*
- *Trails*
- *Flea markets, live music, movie showings*
- *Summer program through the town*
- *Outdoor movies or music*
- *More walking trail options*
- *Music in the park (other than MusicFest) - maybe art*
- *Turning one of the parks into a winter wonderland would be very fun. Or maybe the humane society brings adoptable pets to the park!*
- *Not sure what you already have*
- *Children's programs, movies in the park*
- *would like to see the water pad expanded. more kids activities*

How likely are you to attend a weekly Farmers Market if it were hosted at Rocketship Park?

(2025 Fremont Parks Use Survey, 45 Responses)

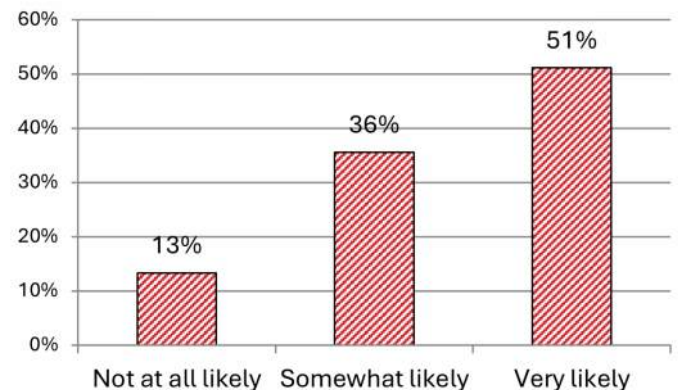


Please explain your response.

- I would go but not necessarily every week
- It would need to be a good farmer's market
- If it were produce and dairy and meats. I would visit every time.
- It would be much more convenient than having to go to Angola or Hillsdale
- They need other products besides amish made bread and rotten vegetables.
- Always attend the markets
- With the crash of the economy we will need to turn to the community to buy produce from directly.
- It depends on my needs
- I loved the farmers market, I can never make it to angola
- Would depend on the vendors and variety
- I think a weekly farmers market would be beneficial to Fremont and bring in more visitors.
- I probably wouldn't be a regular but would go if looking for something that's not in my garden.
- I love farmer's markets. Fresh produce and eggs are better than the store.
- If I get up early enough, it sounds like something I'd go to
- Depends on vendor offerings
- Beautiful idea
- Would love to not have to go into Angola for a market
- I wouldn't have to drive to Angola for it!

How likely are you to attend a weekly Food Truck event if it were hosted at Rocketship Park?

(2025 Fremont Parks Use Survey, 45 Responses)



Please explain your response.

- I would go but not necessarily every week
- I especially love the Thai food truck
- Food trucks are a great way to build community and I am a foodie.
- depends on the week and other activities planned
- I like food.
- always attend the food trucks
- I don't know that a weekly one would hold up in our small community, but a monthly one would be reasonable. I also don't eat out often due to finance, but a monthly once vs. weekly would be manageable.
- Sounds fun
- I am interested in trying different food trucks.
- Depends on the food truck - Chick-Fil-A, yes. Mexican food - probably not (which probably makes me odd).
- Especially if it was koana ice!! That would be amazing in the summer.
- There is a need for this
- This brings community together
- Again, wouldn't have to drive to Angola!

Facilities Inventory and ADA Assessment

In April 2025, the planning team completed an on-site inventory and assessment of each of the town parks. Each site was reviewed for the general condition of facilities and its compliance with standards of the American Disabilities Act (ADA). A summary of findings is provided below and in each park's profile in Chapter 4.

KEY FINDINGS:

- Many spaces could be made more accessible with the addition of wide, paved paths.



- Many facilities were freshly painted in summer 2025.



- Consistent signage would help identify parks and promote pride in the public spaces.



The following are specific accessibility needs identified for each park:

FREMONT PICKLEBALL COURTS

An accessible route provides direct access from the parking to the courts. There are no handicapped vehicle parking spaces designated.

FOLLETT ESTATES PARK

There are no accessible routes or facilities on this site.

PEEK-A-BOO PARK

All amenities in this park are on an accessible route. The nearest designated handicapped vehicle parking space is across Toledo Street.

BROAD STREET PARK

There are no accessible routes or facilities on this site.

ROCKET SHIP PARK

The pavilion, bathrooms, and two benches are on accessible routes. All other spaces and amenities at this park are not. Both bathrooms are handicapped accessible and 1 vehicle parking space is designated handicapped accessible by the entrance.

TOWN BALL PARK

Bleachers, restrooms, and the concessions stand are all on an accessible route. Both bathrooms are handicapped accessible and 1 handicapped accessible vehicle parking space is designated at the entrance. While the drinking fountain is on an accessible route, it does not meet standards as an accessible facility.

The designated ADA Coordinator for the Town of Fremont is Kathy Parsons, Clerk-Treasurer.

INVENTORY OVERVIEW	Fremont Pickleball Courts	Follett Estates Park	Peek-A-Boo Park	Rocket Ship Park	Town Ball Park	Broad Street Park
Amenities						
Benches		✓	✓ ♿	✓ ♿		✓
Bike Parking Spaces				✓ ♿	✓	
Bleachers					✓ ♿	
Dog Waste Bag Dispenser						✓
Drinking Fountains					✓ ♿	
Picnic Tables				✓ ♿		✓
Restrooms				✓ ♿	✓ ♿	
Trash Cans	✓ ♿	✓	✓ ♿	✓ ♿	✓ ♿	✓
Vehicle Parking Spaces	✓ ♿		✓ ♿	✓ ♿	✓ ♿	✓
General Recreation Spaces						
Climbing Structure				✓		
Dog Park						✓
Open Play Field						✓
Play Structure				✓		
Slide		✓		✓		
Splash Pad				✓		
Spring Riders		✓		✓		
Swing		✓		✓		
Sports & Exercise						
Basketball Hoop						✓
Batting Cage					✓	
Diamond Field					✓	
Exercise Equipment				✓		
Pickleball Court	✓ ♿					
Skate Park						✓
Tetherball Pole				✓		
Volleyball Court				✓		
Community Gathering Structures						
Open-Air Shelter / Pavilion				✓ ♿		
Pergola			✓ ♿			

Notes:

✓ = Available at this park

♿ = On an accessible route

An accessible route is noted if there is a stable surface (usually paved) that is at least 36 inches wide and is clear of obstacles.

Excellent Condition: Asset is in new, nearly new, or repaired to new condition.

Good Condition: Only minor deterioration or defects are evident. Minor maintenance may be necessary.

Fair Condition: Moderate wear and tear, but the asset is not significantly affected. It may require moderate maintenance and more frequent tracking.

Poor Condition: Serious deterioration or defects noted that may affect the asset's functionality. Repairs and replacements are needed.

National Recreation and Park Association (NRPA) Park Metrics

NRPA is a not-for-profit organization that provides a wide range of resources to support park and recreation professionals and advocates across the U.S. In its [2025 NRPA Agency Performance Review](#), the organization presents data from the more than 900 unique park and recreation agencies across the country that completed the Agency Performance Survey within Park Metrics from 2022 to 2024. The report highlights characteristics of these agencies in terms of facilities, programming, budget and more. However, as stated in its Executive Summary, “These results are not standards that agencies should strive to obtain — rather, they represent a snapshot of current circumstances.”

Below are several tables that highlight how Fremont parks compare to NRPA agencies that are located in communities with a population of less than 20,000 and agencies in communities with less than 10 full-time equivalent dedicated parks and recreation staff.

General Operations & Characteristics

	Fremont	NRPA agencies in communities with population less than 20,000			NRPA agencies in communities with less than 10 FTEs		
		Lower Quartile	Median	Upper Quartile	Lower Quartile	Median	Upper Quartile
Number of residents per park ⁽¹⁾	331	640	1,001	1,778	868	1,392	3,737
Acres of parkland per 1,000 residents ⁽¹⁾	6.5 ⁽²⁾	5.7	10.9	17.5	4.4	11.0	18.8
Full-time equivalent staff	0.0	6.0	13.8	32.1	3.4	5.2	7.3
Annual operating expenditures	\$39,920 ⁽³⁾	\$665,131	\$1,451,763	\$3,027,510	\$421,515	\$771,594	\$1,145,864
Operating expenditures per capita ⁽¹⁾	\$20.09	\$76.04	\$139.87	\$284.49	\$27.39	\$57.85	\$93.19
Operating expenditures per full-time equivalent	(N/A)	\$69,889	\$107,982	\$150,036	\$89,605	\$142,054	\$203,846
Number of programs offered annually	0	10	45	120	3	20	64
Percent of all programs that are fee-based	(N/A)	59%	83%	93%	55%	80%	94%

Notes:
The “Median” is the middle number in a set of data when it is arranged in order. Half of the numbers are smaller and half are bigger. The “Lower Quartile” is the median of the lower half of the data (not including the overall median if the number of values is odd). It marks the point where the lowest 25% of the data lies. The “Upper Quartile” is the median of the upper half of the data. It marks the point where the highest 25% of the data begins.

⁽¹⁾ Using estimated 2024 population of 1,987

⁽²⁾ This is the area of parkland operated by the reporting agency. With the addition of Vistula Park (approximately 58 acres), acres of parkland per 1,000 residents is 36.2.

⁽³⁾ Approved 2025 budget

KEY FINDINGS:

- Fremont has fewer residents per town park than other similar communities and comparable acres of parkland per resident.
- The town is providing parks and recreation with no full-time staff and a much smaller budget than similar communities.
- Fremont residents have access to many of the same facilities as other similar communities, and have several facilities that are less common in other communities (e.g. skateboard park, pickleball courts, volleyball courts, exercise stations, splashpad, and walking loop).

Prevalence of Outdoor Park and Recreation Facilities	Fremont	NRPA agencies in communities with population less than 20,000	NRPA agencies in communities with less than 10 FTEs
Playgrounds	Y	94%	98%
-- Tot lots (for ages 2-5)	N	55%	53%
-- Playgrounds (for ages 5-12)	Y	49%	44%
-- Playgrounds with inclusive structures	N	33%	28%
Basketball courts	Y (1)	85%	77%
Diamond fields	Y * #	80%	74%
Rectangular fields	N	76%	69%
Tennis courts	N	60%	54%
Dog parks	Y	47%	41%
Community garden plots	N	43%	37%
Swimming pools	N	25%	12%
Skateboard parks	Y	27%	29%
Pickleball courts	Y #	30%	36%
Volleyball courts	Y #	28%	15%
Fitness zones / exercise stations	Y	23%	16%
Splashpads / spraygrounds / showers	Y #	19%	15%
Walking loop / Running tracks	Y *	32%	22%
Disc golf courses	N	16%	11%

Notes: (1) Half courts only, no full court facilities, * Facility provided by other agency, # Seasonal facility only

Programming Offered	Fremont	NRPA agencies in communities with population less than 20,000	NRPA agencies in communities with less than 10 FTEs
Themed special events	Y	85%	73%
Social recreation events	N	82%	70%
Team sports	Y *	81%	72%
Health and wellness education	N	69%	58%
Fitness classes	N	72%	56%

Notes: * Program provided by other agency

PRIORITIES & ACTION SCHEDULE

General Parks and Recreation Actions 2026-2030

Action Item	Action Type	Year(s)	Partners	Notes
Develop a sign replacement policy and design standards to establish consistent signage across all town parks.	Research/Planning	Year 1	Parks Committee and Town Staff	
Evaluate adding winter events to the programming schedule such as skating, German-Style Christmas Market, decorations in parks, Winter Festival (fire pits, etc.)	Program	Year 1	Parks Committee, Town Staff, Chamber, Vendors, Community	
Establish Volunteer Work Days.	Program/ Maintenance	Year 1	Parks Committee, Town Staff, Fremont Community Schools, Service Organizations, Honor Society Students, Eagle Scouts	
Review accessibility standards for parks and recreation and develop an accessibility transition plan.	Research/Planning	Year 1-2	Parks Committee and Town Staff	See page 31 of the IDNR resource: Planning Guidelines for 5-Year Parks and Recreation Master Plans. (https://www.in.gov/dnr/state-parks/files/outdoor-recreation/or-planningguidelines.pdf)
Establish an annual review of park conditions to determine what maintenance issues should be addressed such as painting, equipment replacement, etc. This review will be shared with the Streets Department to guide their maintenance schedule.	Maintenance	Years 1-5	Parks Committee and Town Staff	
Establish a social media account to assist in advertising and promoting the parks.	Administrative	Year 1-5	Parks Committee	
Manage Volunteer Work Days.	Program/ Maintenance	Year 2-5	Parks Committee, Town Staff, Fremont Community Schools, Service Organizations, Honor Society Students, Eagle Scouts	

Broad Street Park Actions 2026-2030

Action Item	Action Type	Year(s)	Partners	Notes
Work with individuals with disabilities or local organizations that advocate for people with disabilities to identify opportunities to make small, low-cost upgrades where possible to improve accessibility of this park.	Research/Planning	Year 1	Parks Committee, Town Staff, Great Lakes ADA Center, The Arc of Indiana	
Evaluate ADA routes to connect Dog Park to parking area.	Planning	Year 1	Parks Committee, Town Staff	
Establish live music and/or outdoor movie events schedule.	Program	Year 1	Parks Committee, Town Staff, Town Council, Chamber of Commerce, other local or regional arts organizations	Investigate Arts or Cultural Grants
Evaluate location and design of a shade structure at the Dog Park.	Planning	Year 1	Parks Committee, Town Staff	
Evaluate locations of existing picnic tables and move one picnic table closer to parking lot to facilitate an ADA compliant connection.	Planning	Year 1-2	Parks Committee, Town Staff	
Add gravel at the gates to the Dog Park or evaluate need to replace with concrete.	Maintenance	Year 1-5	Parks Committee, Town Staff	
Establish a regular weekend/evening time for a Food Truck Event in conjunction with other events at the park.	Program	Year 1-5	Parks Committee, Town Staff, Chamber of Commerce, Vendors	Investigate Arts or Cultural Grants
Evaluate capacity for additional programs or facilities to increase use of this park.	Program	Year 1-5	Parks Committee, Town Staff, Chamber of Commerce	
Install benches at basketball courts.	New Construction	Year 1 or 2	Parks Committee, Town Staff	
Install signage for park identification.	New Construction	Year 2	Parks Committee, Town Staff	
Evaluate space for an amphitheater for live music and outdoor movies.	Planning	Year 2	Parks Committee, Town Staff, Chamber of Commerce, maybe a Consultant or Contractor	Investigate Arts or Cultural Grants
Install shade structure in Dog Park.	New Construction	Year 2	Parks Committee, Town Staff, Contractor	Opportunity for Eagle Scouts to install
Install ADA routes to connect Dog Park to parking area.	New Construction	Year 2 or 3	Parks Committee, Town Staff, Contractor	

Action Item	Action Type	Year(s)	Partners	Notes
Install Dog Park agility equipment.	New Construction	Year 2 or 3	Parks Committee, Town Staff, Contractor	Fundraising event opportunity
Install small amphitheater facility.	New Construction	Year 3	Parks Committee, Town Staff, Town Council, Chamber of Commerce, Consultant or Contractor	Local Building Contractors, Fundraising Campaign, Arts or Cultural Grants

Rocket Ship Park Actions 2026-2030

Action Item	Action Type	Year(s)	Partners	Notes
Work with individuals with disabilities or local organizations that advocate for people with disabilities to identify opportunities to make small, low-cost upgrades where possible to improve accessibility of this park.	Research/Planning	Year 1	Parks Committee, Town Staff, Great Lakes ADA Center, The Arc of Indiana	
Determine capacity to bring back the Farmer's Market.	Research/Planning	Year 1	Parks Committee, Town Staff, Chamber of Commerce, Vendors	
Add paved connection from bench to splash pad to improve accessibility.	New Construction	Year 1	Parks Committee, Town Staff	
Evaluate additional events to utilize existing pavillion.	Program	Year 1-5	Parks Committee, Town Staff, Chamber of Commerce, Vendors	
Establish a regular lunch time Food Truck Event.	Program	Year 1-5	Parks Committee, Town Staff, Chamber of Commerce, Vendors	Investigate Arts or Cultural Grants
Potentially remodel the existing pavilion to better provide space for desired programs and events.	Renovation	Year 2-4	Parks Committee, Town Staff, Contractor	
Evaluate need for pavillion upgrades based on planned programs and events.	Planning	Year 2-5	Parks Committee, Town Staff, Chamber of Commerce, Vendors, maybe a Consultant or Contractor	
Establish regular dates for Farmer's Market.	Program	Year 2-5	Parks Committee, Town Staff, Vendors	Investigate Arts or Cultural Grants

Fremont Pickleball Courts Actions 2026-2030

Action Item	Action Type	Year(s)	Partners	Notes
Identify locations and design for court lighting.	Planning	Year 1	Parks Committee, Town Staff, Fremont Schools, Users	
Identify locations and design for benches.	Planning	Year 1	Parks Committee, Town Staff, Fremont Schools, Users	
Add handicapped parking space with striping and signage.	Planning	Year 1	Parks Committee, Town Staff, Fremont Schools	
Utilize the Park Committee's social media account to assist in advertising and promoting the pickleball courts.	Administrative	Year 1-5	Parks Committee, Town Staff, Fremont Schools	
Install benches.	New Construction	Year 2	Parks Committee, Town Staff, Fremont Schools, Contractor	
Install signage for park identification.	New Construction	Year 2	Parks Committee, Town Staff, Fremont Schools	
Install court lighting.	New Construction	Year 3	Parks Committee, Town Staff, Fremont Schools, Contractor	

Town Ball Park Actions 2026-2030

Action Item	Action Type	Year(s)	Partners	Notes
Work with individuals with disabilities or local organizations that advocate for people with disabilities to identify opportunities to make small, low-cost upgrades where possible to improve accessibility of this park.	Research/Planning	Year 1	Parks Committee, Town Staff, Great Lakes ADA Center, The Arc of Indiana	
Replace current drinking fountain with one that meets ADA standards	New Construction	Year 1 or 2	Parks Committee, Town Staff	
Top dress infield surface	Maintenance	Year 1 or 2	Town Staff or Contractor	
Aerate, overseed, and treat outfield with herbicide.	Maintenance	Year 1 or 2	Town Staff or Contractor	
Install signage for park identification and field reservation information.	New Construction	Year 2	Parks Committee, Town Staff	

Follett Estates Park Actions 2026-2030

Action Item	Action Type	Year(s)	Partners	Notes
Conduct a town-wide survey to determine how the community would like to use a new park at Follett Estates.	Planning	Year 1	Parks Committee, Town Staff, Community, Consultant	
Design a trail to connect Vistula Park and Follett Estates.	Planning	Year 1	Parks Committee, Town Staff, Community, Consultant	
Coordinate a design workshop to determine new park improvements.	Planning	Year 2	Parks Committee, Town Staff, Community, Consultant	
Construct a trail to connect Vistula Park and Follett Estates.	New construction	Year 2	Parks Committee, Town Staff, Community, Consultant	
Move existing reusable Follett park equipment to east end of new space if desired by the community	Maintenance	Year 3	Parks Committee, Town Staff, Community	Potential for volunteer work day activity
Install signage for park identification.	New Construction	Year 3	Parks Committee, Town Staff	
Install park improvements.	New construction	Year 3-5	Parks Committee, Town Staff, Community, Consultant, Contractor	

Peek-A-Boo Park Actions 2026-2030

Action Item	Action Type	Year(s)	Partners	Notes
Install a small table or new seating with an attached table under the pergola.	New construction	Year 1	Parks Committee, Town Staff, Chamber of Commerce	Potential for donation of funds or equipment from local individuals or company with acknowledgement on items
Install signage for park identification.	New Construction	Year 2	Parks Committee, Town Staff	

APPENDIX

- A. 2025 Fremont Community Survey Results
- B. 2025 Fremont Parks Use Survey Results
- C. Parks Plan Workshop Sign-in Sheet
- D. Parks Plan Workshop - Proposed Improvements
- E. Draft Parks Plan Open House Sign-in Sheet
- F. Minutes from the Parks Committee Recommendation to Approve the 2026-2030 Parks & Recreation Master Plan
- G. Resolution of Adoption

APPENDIX A

2025 FREMONT COMMUNITY SURVEY RESULTS

APPENDIX B

2025 FREMONT PARKS USE SURVEY RESULTS

APPENDIX C

PARKS PLAN WORKSHOP SIGN-IN SHEET

APPENDIX D

PARKS PLAN WORKSHOP - PROPOSED IMPROVEMENTS

APPENDIX E

DRAFT PARKS PLAN OPEN HOUSE SIGN-IN SHEET

APPENDIX F

MINUTES FROM THE PARKS COMMITTEE RECOMMENDATION TO APPROVE THE 2026- 2030 PARKS & RECREATION MASTER PLAN

APPENDIX G

RESOLUTION OF ADOPTION